



الخصائص
الأساسية
للمساكن

1.

أ - توزيع المساكن الرئيسية بحسب المحافظات

1

879855
42.2
18.5

11.6) (5.9) 11.7) (10.2) ((6-1))

(6-1)

()
11.6
42.2
18.5
11.7
10.2
5.9
100.0

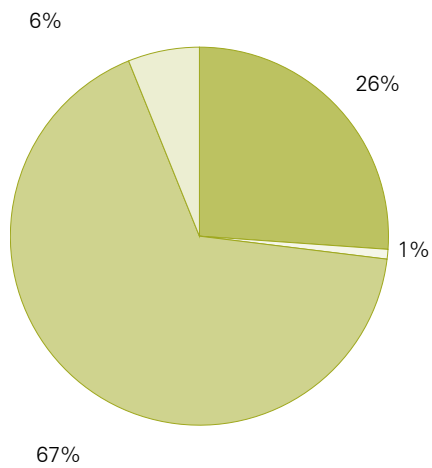
ب - توزيع المساكن الرئيسية بحسب نوع المسكن

67.0 :

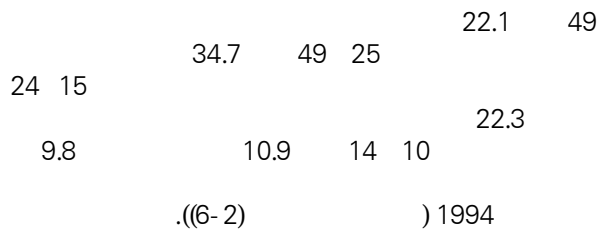
26.0 " 6.0
" 1.0 " " "

((6-1))

(6-1)

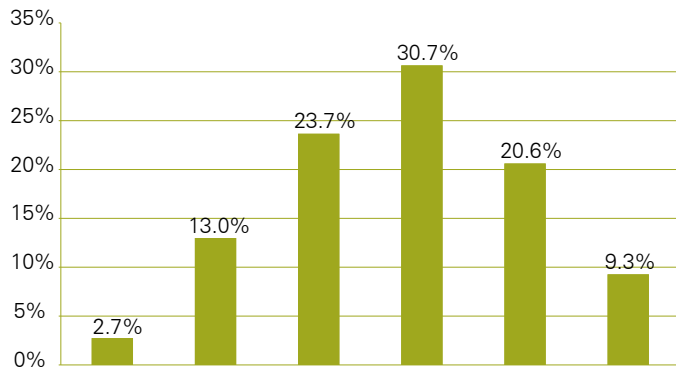


ج - توزيع المساكن الرئيسية بحسب عمر المسكن

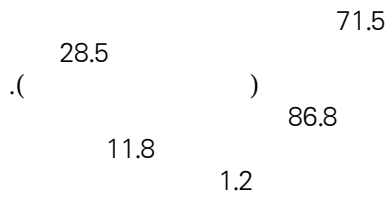


((6-2))

(6-2)



هـ - توزيع المساكن الرئيسية بحسب ملكية المسكن وبحسب نوع هذه الملكية



(6-2)

()		
22.1	49	
34.7	49	25
22.3	24	15
10.9	14	10
7.2	9	5
2.6	5	
0.2		
100.0		

د - توزيع المساكن الرئيسية بحسب المساحة وعدد الغرف² والمادة الرئيسية المستعملة في أرض المسكن

2 80		15.0
2 130 80		42.4
2 180 130		23.4
19.2	2 180	
	((6-3))	
6.5		83.6
		9.2

(6-3)

()		
1.4	2 30	
13.6	2 80	30
42.4	2 130	80
23.4	2 180	130
14.2	2 230	180
5.0	2 230	
100.0		

30.7

23.7

13.0

20.6

9.3

((6-2))

.2

:

(3)

2

45.5

أ- مصادر المياه ووسيلة الصرف الصحي في المساكن الرئيسية

21.2
((6-6))

)

(1)

:(

56.7

(6 6)

31.8

(7.0)

(8.2)

)(2.1)

(6.2)

((6-4))

8.4

()

(6 4)

21.2	45.5
43.0	36.0
31.6	16.2
3.0	0.8
0.3	0.2
1.0	1.3
100.0	100.0

100.0	43.3	56.7
100.0	68.2	31.8
100.0	91.8	8.2
100.0	93.0	7.0
100.0	93.8	6.2
100.0	97.9	2.1

:

(4)

1.9

67.4
29.5

ب - مصادر الطاقة للإضاءة والطهي في المساكن الرئيسية (يمكن استخدام أكثر من وسيلة واحدة في الوقت نفسه):

)

(2)

75.8
21.4

:(

4.0

15.1

1.5
)

((6-5))

(6 5)

) 38.9
15.8 ()
((6-7)) (...)14.3
73.7 ()
11.7 ()

100.0	24.2	75.8
100.0	78.6	21.4
100.0	84.9	15.1
100.0	96.0	4.0
100.0	98.5	1.5

د - طرق ووتيرة التخلص من النفايات في المساكن الرئيسية (يمكن استخدام أكثر من وسيلة واحدة في الوقت نفسه):

(6-7)

		72.0		
			17.2	
9.4				11.6
	2.9			
	1.5		2.2	
		(6-9)		

(6-9)

100.0	28.0	72.0
100.0	82.8	17.2
100.0	88.4	11.6
100.0	90.6	9.4
100.0	97.1	2.9
100.0	97.8	2.2
100.0	98.5	1.5

80
17.2

100.0	0.1	99.9
100.0	61.1	38.9
100.0	98.1	1.9
100.0	98.7	1.3
100.0	84.2	15.8

99.6
1.2
1.4

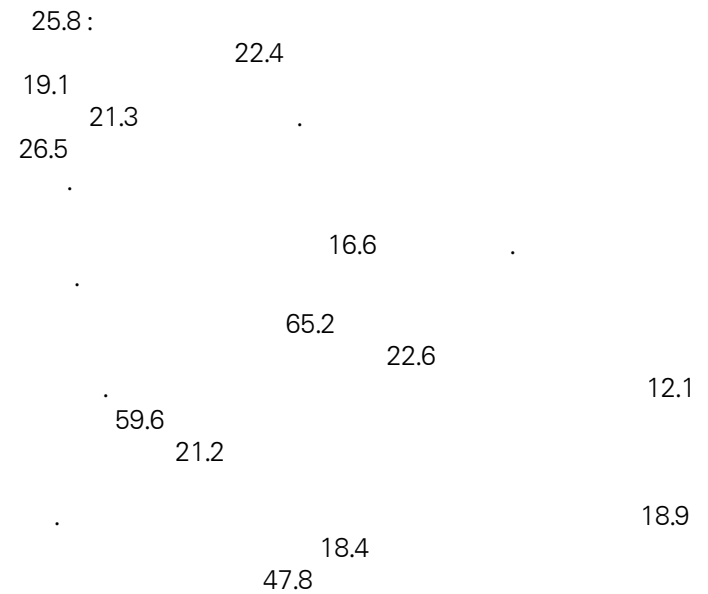
ج - وسائل التدفئة في المساكن الرئيسية (يمكن استخدام أكثر من وسيلة واحدة في الوقت نفسه):

		34.8
	24	
		(17.1)
	(16.8)	
	5.6	
	9.2	2.3
	(6-8)	

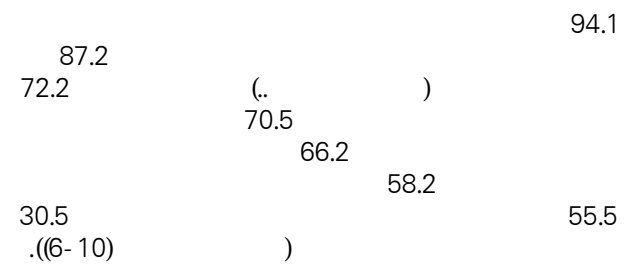
(6-8)

100.0	65.2	34.8
100.0	76.0	24.0
100.0	82.9	17.1
100.0	83.2	16.8
100.0	94.4	5.6
100.0	97.7	2.3
100.0	90.8	9.2

أ - المحيط الخارجي للمساكن الرئيسية



ب - توزيع المساكن الرئيسية بحسب توافر بعض الخدمات في الجوار



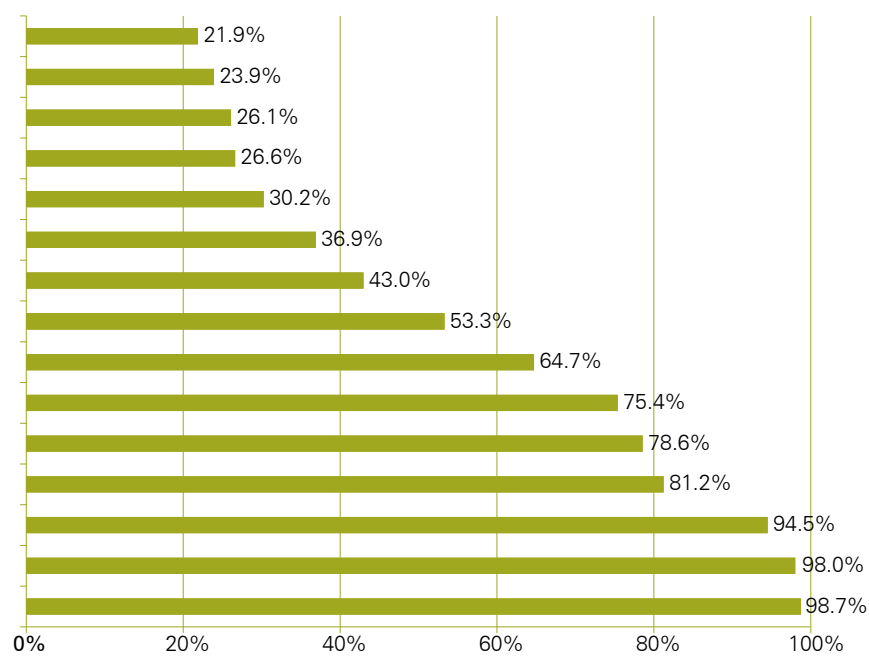
(6-10)

100.0	0.0	5.9	94.1
100.0	0.1	12.8	87.2
100.0	0.1	27.8	72.2
100.0	2.3	27.2	70.5
100.0	1.0	32.8	66.2
100.0	2.3	39.4	58.2
100.0	0.9	43.6	55.5
100.0	0.4	69.1	30.5

أ - توافر الأجهزة المنزلية في المسكن الرئيسي

الأجهزة المنزلية	توافرها (%)
التلفزيون	98.7
الغسالة	94.5
الثلاجة	81.2
الفرن	78.6
الغسالة الجافة	75.4
الغسالة اليدوية	64.7
الغسالة الأوتوماتيكية	10.0
الغسالة اليدوية	23.9

(6-3)



ب - توزيع الأسر بحسب امتلاكها وسائل النقل

وسائل النقل	توزيع الأسر (%)
لا تمتلك وسائل النقل	1.1
تتمتع بوسائل النقل	98.9

” 94 . 66.2 8.5
 12.0 31.9 “
 3 86.5
 . 10.8 60.6
 8.5 89.1 26.5
 .

Table 146

Distribution of primary residences according to Governorates

Governorates	Frequency	(%) percentage
Beirut	101695	11.5
Mount Lebanon	371289	42.1
Northern Lebanon	162344	18.4
Bekaa	102797	11.6
Southern Lebanon	89423	10.1
Nabatieh	52306	5.9
total	879855	100

Table 147 a

(147)

Distribution of primary residences according to type of residence and Governorates

Type of residence	Governorates						
	Beirut	Mount Lebanon	Northern Lebanon	Bekaa	Southern Lebanon	Nabatieh	Lebanon
Independent house	2620	57199	52830	49881	32748	33821	229099
Villa	94	2416	996	1140	433	552	5631
Apartment in an independent building	98421	278332	101487	49954	46953	15500	590647
Apartment in a residential project	187	32734	6095	1416	8056	2307	50795
Improvised residence	0	300	332	150	740	37	1559
Other	94	76	0	0	184	0	354
No response	281	231	604	256	310	90	1772
Total	101697	371288	162344	102797	89424	52307	879857

Table 7-2b

7-2

Percentage distribution of primary residences according to type of residence and Governorates

()

Type of residence	Governorates						
	Beirut	Mount Lebanon	Northern Lebanon	Bekaa	Southern Lebanon	Nabatieh	Lebanon
Independent house	2.5	15.4	32.5	48.5	36.6	64.6	26.0
Villa	0.1	0.6	0.6	1.1	0.4	1.1	0.6
Apartment in an independent building	96.7	74.9	62.5	48.5	52.5	29.6	67.1
Apartment in a residential project	0.1	8.8	3.7	1.3	9.0	4.4	5.7
Improvised residence		0.1	0.2	0.1	0.8	0.1	0.1
Other	0.1	0.0			0.2		0.0
No response	0.2	0.1	0.3	0.2	0.3	0.1	0.2
Total	100	100	100	100	100	100	100

Table 148a

(148)

Distribution of primary residences according to age of residence and Governorates

Age of residence	Governorates								
	Beirut	Mount Lebanon	Northern Lebanon	Bekaa	Southern Lebanon	Nabatieh	Lebanon		
More than 49 years	45842	84431	20022	17730	14366	11925	194316	49	
to 49 25 years	38919	126516	48956	45354	32881	13071	305697	25	49
to 24 15 years	6830	84392	46565	18544	26952	13080	196363	24	15
to 14 10 years	4116	44919	21837	8897	8817	7309	95895	14	10
to 9 years 5	5239	24579	18357	6462	4280	4301	63218	9	5
Less than 5 years	655	5038	6383	5810	2128	2568	22582	5	
No response	94	1415	224	0	0	53	1786		
Total	101695	371290	162344	102797	89424	52307	879857		

Table 148b

(148)

Percentage distribution of primary residences according to age of residence and Governorates

()

Age of residence	Governorates							
	Beirut	Mount Lebanon	Northern Lebanon	Bekaa	Southern Lebanon	Nabatieh	Lebanon	
More than 49 years	45.1	22.7	12.3	17.2	16.1	22.7	22.1	49
to 49 25 years	38.2	34.1	30.1	44.1	36.7	24.9	34.7	25 49
to 24 15 years	6.7	22.7	28.6	18.0	30.1	25.0	22.3	15 24
to 14 10 years	4.0	12.1	13.4	8.6	9.8	13.9	10.8	10 14
to 9 years 5	5.1	6.6	11.3	6.2	4.7	8.2	7.1	9 5
Less than 5 years	0.6	1.3	3.9	5.6	2.3	4.9	2.5	5
No response	0.1	0.3	0.1			0.1	0.2	
Total	100	100	100	100	100	100	100	

Table 149a

(149)

Distribution of primary residences according to area of residence and Governorates

Area of residence	Governorates								
	Beirut	Mount Lebanon	Northern Lebanon	Bekaa	Southern Lebanon	Nabatieh	Lebanon		
Less than 30m ²	4865	5403	1171	378	310	180	12307	² 30	
From 30m ² to less than 80m ²	22173	62244	10472	5623	15014	4103	119629	² 80	30
From 80m ² to less than 130m ²	41820	167411	72384	30657	38110	22986	373368	² 130	80
From 130m ² to less than 180m ²	16653	85543	30478	35706	22876	14736	205992	180	130 ²
From 180m ² to less than 230m ²	9730	35020	40269	23389	8844	7254	124506	230	180 ²
More than 230 m ²	6455	15668	7569	7044	4269	3048	44053		² 230
Total	101696	371289	162343	102797	89423	52307	879855		

Table 149b

7-4

Percentage distribution of primary residences according to area of residence and Governorates

()

Area of residence	Governorates								
	Beirut	Mount Lebanon	Northern Lebanon	Bekaa	Southern Lebanon	Nabatieh	Lebanon		
Less than 30m ²	4.7	1.4	0.7	0.3	0.3	0.3	1.3	² 30	
From 30m ² to less than 80m ²	21.8	16.7	6.4	5.4	16.7	7.8	13.5	² 80	30
From 80m ² to less than 130m ²	41.1	45.1	44.5	29.8	42.6	43.9	42.4	² 130	80
From 130m ² to less than 180m ²	16.3	23.0	18.7	34.7	25.5	28.1	23.4	180	130 ²
From 180m ² to less than 230m ²	9.5	9.4	24.8	22.7	9.8	13.8	14.1	230	180 ²
More than 230 m ²	6.3	4.2	4.6	6.8	4.7	5.8	5.0		² 230
Total	100	100	100	100	100	100	100		

Table 150

(150)

Average area of primary residence according to Governorates

Governorates	Mean of the roofed residential area
Beirut	117.1
Mount Lebanon	121.0
Northern Lebanon	140.3
Bekaa	151.5
Southern Lebanon	127.1
Nabatieh	137.4
Lebanon	129.3

Table 151 a

(151)

Distribution of primary residences according to area of residence and number of rooms

Area of residence	Number of rooms						No re- sponse	Total	
	1	2	3	4	5	6+			
Less than 30m ²	8761	1505	546	518	492	409	76	12307	² 30
From 30m ² to less than 80m ²	14730	73040	27595	4048	0	0	217	119630	² 80 30
From 80m ² to less than 130m ²	584	38716	151287	148077	32684	1844	176	373368	130 80 ²
From 130m ² to less than 180m ²	52	739	25026	81392	84340	14407	37	205993	130 ² 180
From 180m ² to less than 230m ²	0	166	3710	34296	54914	31249	171	124506	180 ² 230
More than 230 m ²	0	69	0	1345	8941	33632	68	44055	² 230
Total	24127	114235	208164	269676	181371	81541	745	879859	

Table 151 b

(151)

Percentage distribution of primary residences according to area of residence and number of rooms

()

Area of residence	Number of rooms							Total	
	1 1	2 2	3 3	4 4	5 5	6 6+	No re- sponse		
Less than 30m ²	71.1	12.2	4.4	4.2	3.9	3.3	0.6	100	² 30
From 30m ² to less than 80m ²	12.3	61.1	23.1	3.3		0.0	0.1	100	² 80
From 80m ² to less than 130m ²	0.1	10.3	40.5	39.6	8.7	0.4	0.0	100	² 130
From 130m ² to less than 180m ²	0.0	0.3	12.1	39.5	40.9	6.9	0.0	100	² 180
From 180m ² to less than 230m ²		0.1	2.9	27.5	44.1	25.1	0.1	100	² 230
More than 230 m ²	0.1		0.1		3.1	92.4	4.1	100	² 230
Total	2.7	12.9	23.6	30.6	20.6	9.3	0.1	100	

Table 152a

(152)

Distribution of primary residences according to area of residence and number of household members

Number of household members	Area of residence						Total	
	Less than 30m ²	From 30m ² to less than 80m ²	From 80m ² to less than 130m ²	From 130m ² to less than 180m ²	From 180m ² to less than 230m ²	More than 230 m ²		
	30	80	130	180	230	230		
1	4250	19232	23963	8748	6061	1751	64005	1
2	1840	22097	56984	25126	15239	6091	127377	2
3	1280	16625	60712	31375	17870	6216	134078	3
4	1624	20341	78250	42545	22371	8573	173704	4
5	1764	18015	69046	40592	24922	8453	162792	5
6	934	10716	44655	28112	16463	6203	107083	6
7	280	6862	20729	15492	9541	3766	56670	7
8	252	2337	10303	7489	5209	1427	27017	8
9	83	1722	5131	3420	2559	843	13758	9
and more 10	0	1681	3596	3092	4270	732	13371	10
Total	12307	119628	373369	205991	124505	44055	879855	

Table 152b

(152)

Percentage distribution of primary residences according to area of residence and number of household members

()

Number of household members	Area of residence							Total	
	Less than 30m ²	From 30m ² to less than 80m ²	From 80m ² to less than 130m ²	From 130m ² to less than 180m ²	From 180m ² to less than 230m ²	More than 230 m ²			
	30	80	130	180	230	230			
1	6.6	30.0	37.4	13.6	9.4	2.7	100	1	
2	1.4	17.3	44.7	19.7	11.9	4.7	100	2	
3	0.9	12.4	45.2	23.4	13.3	4.6	100	3	
4	0.9	11.7	45.0	24.4	12.8	4.9	100	4	
5	1.1	11.1	42.4	24.9	15.3	5.1	100	5	
6	0.8	10.0	41.7	26.2	15.3	5.7	100	6	
7	0.4	12.1	36.5	27.3	16.8	6.6	100	7	
8	0.9	8.6	38.1	27.7	19.2	5.2	100	8	
9	0.6	12.5	37.2	24.8	18.6	6.1	100	9	
and more 10		12.5	26.8	23.1	31.9	5.4	100	10	
Total	1.3	13.5	42.4	23.4	14.1	5.0	100		

Table 153a

(153)

Distribution of primary residences according to number of rooms and Governorates

Number of rooms	Governorates							
	Beirut	Mount Lebanon	Northern Lebanon	Bekaa	Southern Lebanon	Nabatieh	Lebanon	
1	6268	12124	1591	969	2371	803	24126	1
2	12817	52731	12007	11660	16115	8904	114234	2
3	17214	80221	34648	32939	25463	17677	208162	3
4	31528	105618	61216	30141	25743	15431	269677	4
5	21518	86081	36691	17349	13591	6140	181370	5
6+	12350	34210	15952	9739	6013	3277	81541	6
No response	0	303	239	0	129	74	745	
Total	101695	371288	162344	102797	89425	52306	879855	

Table 153b

(153)

Percentage distribution of primary residences according to number of rooms and Governorates

()

Number of rooms	Governorates							
	Beirut	Mount Lebanon	Northern Lebanon	Bekaa	Southern Lebanon	Nabatieh	Lebanon	
1	6.1	3.2	0.9	0.9	2.6	1.5	2.7	1
2	12.6	14.2	7.3	11.3	18.0	17.0	12.9	2
3	16.9	21.6	21.3	32.0	28.4	33.7	23.6	3
4	31.0	28.4	37.7	29.3	28.7	29.5	30.6	4
5	21.1	23.1	22.6	16.8	15.1	11.7	20.6	5
6+	12.1	9.2	9.7	9.4	6.7	6.2	9.2	6
No response		0.1	0.1		0.1	0.1	0.1	
Total	100	100	100	100	100	100	100	

Table 154 a

(154)

Distribution of primary residences according to ownership of primary residence by one of the household members and Governorates

Ownership of primary residence by one of the household members	Governorates						
	Beirut	Mount Lebanon	Northern Lebanon	Bekaa	Southern Lebanon	Nabatieh	Lebanon
Owned	43410	241580	135513	94899	65820	47609	628831
Not owned	58285	129709	26831	7898	23603	4698	251024
Total	101695	371289	162344	102797	89423	52307	879855

Table 154 b

(154)

Percentage distribution of primary residences according to ownership of primary residence by one of the household members and Governorates

()

Ownership of primary residence by one of the household members	Governorates						
	Beirut	Mount Lebanon	Northern Lebanon	Bekaa	Southern Lebanon	Nabatieh	Lebanon
Owned	42.6	65.1	83.4	92.3	73.6	91.0	71.4
Not owned	57.3	34.9	16.5	7.6	26.3	8.9	28.5
Total	100	100	100	100	100	100	100

Table 155a

(155)

Distribution of primary residences owned by one of the household members according to type of ownership and Governorates

Type of ownership	Governorates						
	Beirut	Mount Lebanon	Northern Lebanon	Bekaa	Southern Lebanon	Nabatieh	Lebanon
individual ownership	31248	214528	122003	73531	61564	42935	545809
shared with household members	8420	24244	12211	20750	4192	4398	74215
shared with relatives or others	3742	2295	827	466	64	186	7580
No response	0	512	472	152	0	90	1226
Total	43410	241579	135513	94899	65820	47609	628830

Table 155b

(155)

Percentage distribution of primary residences owned by one of the household members according to type of ownership and Governorates

Type of ownership	Governorates						
	Beirut	Mount Lebanon	Northern Lebanon	Bekaa	Southern Lebanon	Nabatieh	Lebanon
individual ownership	71.9	88.8	90.0	77.4	93.5	90.1	86.7
shared with household members	19.3	10.0	9.0	21.8	6.3	9.2	11.8
shared with relatives or others	8.6	0.9	0.6	0.4	0.1	0.3	1.2
No response		0.2	0.3	0.1		0.1	0.1
Total	100	100	100	100	100	100	100

Table 156a

(156)

Distribution of primary residences not owned by one of the household members according to status of residence occupation and Governorates

Status of residence occupation	Governorates						
	Beirut	Mount Lebanon	Northern Lebanon	Bekaa	Southern Lebanon	Nabatieh	Lebanon
rent	50333	105656	22418	6114	14505	2363	201389
confiscation	187	2020	233	77	1770	37	4324
freely donated by the employer	3929	5688	1753	696	1680	276	14022
freely donated by the family	3368	15321	2345	704	4514	2022	28274
other	468	948	83	306	1134	0	2939
No response	0	76	0	0	0	0	76
Total	58285	129709	26832	7897	23603	4698	251024

Table 156b

(156)

Percentage distribution of primary residences not owned by one of the household members according to status of residence occupation and Governorates

Status of residence occupation	Governorates						
	Beirut	Mount Lebanon	Northern Lebanon	Bekaa	Southern Lebanon	Nabatieh	Lebanon
rent	86.3	81.4	83.5	77.4	61.4	50.2	80.2
confiscation	0.3	1.5	0.8	0.9	7.5	0.7	1.7
freely donated by the employer	6.7	4.3	6.5	8.8	7.1	5.8	5.5
freely donated by the family	5.7	11.8	8.7	8.9	19.1	43.0	11.2
other	0.8	0.7	0.3	3.8	4.8		1.1
No response		0.1					0.0
Total	100	100	100	100	100	100	100

Table 157 a

(157)

Distribution of primary residences according to primary flooring material and Governorates

Primary flooring material	Governorates						
	Beirut	Mount Lebanon	Northern Lebanon	Bekaa	Southern Lebanon	Nabatieh	Lebanon
marble	14688	50323	5637	4625	4300	1758	81331
vinyl	187	388	0	0	61	0	636
parquet	1029	981	394	282	58	112	2856
floor tiles	84575	308086	138690	85478	75471	43602	735902
cement	1029	10989	16796	12214	9167	6692	56887
other	0	0	292	103	187	90	672
No response	187	522	534	95	178	53	1569
Total	101695	371289	162343	102797	89422	52307	879853

Table 157 b

(157)

Percentage distribution of primary residences according to primary flooring material and Governorates

()

Primary flooring material	Governorates						
	Beirut	Mount Lebanon	Northern Lebanon	Bekaa	Southern Lebanon	Nabatieh	Lebanon
marble	14.4	13.5	3.4	4.5	4.8	3.3	9.2
vinyl	0.1	0.1			0.1		0.1
parquet	1.0	0.2	0.2	0.2	0.1	0.2	0.3
floor tiles	83.1	82.9	85.4	83.1	84.3	83.3	83.6
cement	1.0	2.9	10.3	11.8	10.2	12.7	6.4
other			0.1	0.1	0.2	0.1	0.1
No response	0.1	0.1	0.3	0.1	0.2	0.1	0.1
Total	100	100	100	100	100	100	100

Table 153a

(158)

Distribution of primary residences according to sources of potable water (more than one source may be available) and Governorates

()

Sources of potable water	Governorates						
	Beirut	Mount Lebanon	Northern Lebanon	Bekaa	Southern Lebanon	Nabatieh	Lebanon
Public network	62776	170054	99850	74406	57265	34614	498964
Private network	94	3213	7102	4341	2958	1200	18909
Artesian well	281	9970	29782	20421	9787	1560	71800
Mineral water	65489	167991	16040	7135	16869	6381	279907
Purchased water tanks	94	50380	2011	5972	614	2146	61217
Spring or running water	936	18108	23909	4520	1012	5753	54238 ()
Other	374	7983	286	613	3540	5685	18483

Table 153b

(158)

Percentage distribution of primary residences according to sources of potable water (more than one source may be available) and Governorates

) () (

Sources of potable water	Governorates						
	Beirut	Mount Lebanon	Northern Lebanon	Bekaa	Southern Lebanon	Nabatieh	Lebanon
Public network	61.7	45.8	61.5	72.3	64.0	66.1	56.7
Private network	0.1	0.8	4.3	4.2	3.3	2.2	2.1
Artesian well	0.2	2.6	18.3	19.8	10.9	2.9	8.1
Mineral water	64.3	45.2	9.8	6.9	18.8	12.2	31.8
Purchased water tanks	0.1	13.5	1.2	5.8	0.6	4.1	6.9
Spring or running water	0.9	4.8	14.7	4.3	1.1	10.9	6.1 ()
Other	0.3	2.1	0.1	0.5	3.9	10.8	2.1

Table 159a

(159)

Distribution of primary residences according to means used for sterilization of potable water and Governorates

Means used for sterilization of potable water	Governorates							
	Beirut	Mount Lebanon	Northern Lebanon	Bekaa	Southern Lebanon	Nabatieh	Lebanon	
don't use	93650	336883	145323	92171	83149	47156	798332	
refining or filtering	7484	33370	13979	9081	5492	4564	73970	()
using disinfectants	187	356	1068	827	129	195	2762	
No response	374	679	1974	718	654	391	4790	
Total	8045	34405	17021	10626	6275	5150	879854	

Table 159b

(159)

Percentage distribution of primary residences according to means used for sterilization of potable water and Governorates

Means used for sterilization of potable water	Governorates							
	Beirut	Mount Lebanon	Northern Lebanon	Bekaa	Southern Lebanon	Nabatieh	Lebanon	
none used	92.1	90.7	89.5	89.6	92.9	90.1	90.7	
refining or filtering	7.3	8.9	8.6	8.8	6.1	8.7	8.4	()
using disinfectants	0.1	0.1	0.6	0.8	0.1	0.3	0.3	
No response	0.3	0.1	1.2	0.6	0.7	0.7	0.5	
Total	100	100	100	100	100	100	100	

Table 160a

(160)

Distribution of primary residences according to source of service water (more than one source may be available) and Governorates

Source of service water	Governorates						
	Beirut	Mount Lebanon	Northern Lebanon	Bekaa	Southern Lebanon	Nabatieh	Lebanon
Public network	92527	276157	108096	76415	69071	44758	667023
Private network	1403	9854	11938	4753	5261	2189	35400
Artesian well	26383	86184	37607	22035	14667	1845	188721
Purchased water tanks	3836	86665	13778	10948	6020	11443	132689
Spring or running water	0	4135	6159	1064	509	1479	13347 ()
Other	187	2178	1016	708	1069	2363	7522

Table 160b

(160)

Percentage distribution of primary residences according to source of service water (more than one source may be available) and Governorates

Source of service water	Governorates						
	Beirut	Mount Lebanon	Northern Lebanon	Bekaa	Southern Lebanon	Nabatieh	Lebanon
Public network	90.9	74.3	66.5	74.3	77.2	85.5	75.8
Private network	1.3	2.6	7.3	4.6	5.8	4.1	4.0
Artesian well	25.9	23.2	23.1	21.4	16.4	3.5	21.4
Purchased water tanks	3.7	23.3	8.4	10.6	6.7	21.8	15.1
Spring or running water	1.1	3.7	1.0	0.5	2.8		1.5 ()
Other	0.1	0.5	0.6	0.6	1.1	4.5	0.8

Table 161 a

(161)

Distribution of primary residences according to the availability of service water during summer from the public network

	In summer	
Availability of service water from the public network	Frequency	(%) percentage (%)
Permanently	141151	21.1
Daily with cutoffs	286585	42.9
With weekly cutoffs	210986	31.6
With cutoffs lasting more than 1 week	19970	2.9
Others	1800	0.2
No response	6624	0.9
Total	667117	100

Table 161 b

(161)

Distribution of primary residences according to the availability of service water during winter from the public network

	In winter	
Availability of service water from the public network	Frequency	(%) percentage (%)
Permanently	303829	45.5
Daily with cutoffs	239978	35.9
With weekly cutoffs	107866	16.1
With cutoffs lasting more than 1 week	5354	0.8
Others	1565	0.2
No response	8524	1.2
Total	667117	100

Table 162a

(162)

Distribution of primary residences according to availability of service water during summer from the public network and Governorates

Availability of service water during summer from the public network	Governorates						
	Beirut	Mount Lebanon	Northern Lebanon	Bekaa	Southern Lebanon	Nabatieh	Lebanon
permanently	4958	41243	50774	18895	23135	2146	141151
daily with cut-offs	58847	124729	23004	45040	29321	5644	286585
with weekly cutoffs	28722	93031	30512	10725	14508	33489	210987
with cutoffs lasting more than 1 week	0	13122	1631	1338	970	2909	19970
other	0	1592	156	0	0	53	1801
No response	94	2441	2019	417	1137	518	6626
Total	92621	276158	108096	76415	69071	44759	667120

Table 162b

(162)

Percentage distribution of main residences according to availability of service water during summer from the public network and Governorates

()

Availability of service water during summer from the public network	Governorates						
	Beirut	Mount Lebanon	Northern Lebanon	Bekaa	Southern Lebanon	Nabatieh	Lebanon
permanently	5.3	14.9	46.9	24.7	33.4	4.7	21.1
daily with cut-offs	63.5	45.1	21.2	58.9	42.4	12.6	42.9
with weekly cutoffs	31.0	33.6	28.2	14.0	21.0	74.8	31.6
with cutoffs lasting more than 1 week		4.7	1.5	1.7	1.4	6.5	2.9
other		0.5	0.1			0.1	0.2
No response	0.1	0.8	1.8	0.5	1.6	1.1	0.9
Total	100	100	100	100	100	100	100

Table 163a

(163)

Distribution of primary residences according to availability of service water during winter from the public network and Governorates

Availability of service water during winter from the public network	Governorates						
	Beirut	Mount Lebanon	Northern Lebanon	Bekaa	Southern Lebanon	Nabatieh	Lebanon
permanently	31154	107034	80519	42827	30828	11467	303829
daily with cutoffs	34429	124851	15192	25464	30322	9721	239979
with weekly cutoffs	26663	37129	9763	7046	6281	20983	107865
with cutoffs lasting more than 1 week	0	2400	462	592	117	1783	5354
other	0	1237	239	0	0	90	1566
No response	374	3506	1922	486	1523	713	8524
Total	92620	276157	108097	76415	69071	44757	667117

Table 163b

(163)

Percentage distribution of primary residences according to availability of service water during summer from the public network and Governorates

Availability of service water during winter from the public network	Governorates						
	Beirut	Mount Lebanon	Northern Lebanon	Bekaa	Southern Lebanon	Nabatieh	Lebanon
permanently	33.6	38.7	74.4	56.0	44.6	25.6	45.5
daily with cutoffs	37.1	45.2	14.1	33.3	43.9	21.7	35.9
with weekly cutoffs	28.7	13.4	9.0	9.2	9.1	46.8	16.1
with cutoffs lasting more than 1 week		0.8	0.4	0.7	0.1	3.9	0.8
other		0.4	0.2			0.2	0.2
No response	0.4	1.2	1.7	0.6	2.2	1.5	1.2
Total	100	100	100	100	100	100	100

Table 164 a

(164)

Distribution of primary residences according to sanitation means and Governorates

Means of sanitation	Governorates						
	Beirut	Mount Lebanon	Northern Lebanon	Bekaa	Southern Lebanon	Nabatieh	Lebanon
public sewers network	100853	278131	99286	47035	58757	9371	593433
open sewers network	187	4691	9513	1085	678	149	16303
sanitary pits	0	83798	50826	53894	29205	42142	259865
non-existent	0	80	204	301	0	105	690
other	94	213	272	116	0	0	695
No response	561	4375	2243	365	783	540	8867
Total	101695	371288	162344	102796	89423	52307	879853

Table 164 b

(164)

Percentage distribution of primary residences according to sanitation means and Governorates

()

Means of sanitation	Governorates						
	Beirut	Mount Lebanon	Northern Lebanon	Bekaa	Southern Lebanon	Nabatieh	Lebanon
public sewers network	99.1	74.9	61.1	45.7	65.7	17.9	67.4
open sewers network	0.1	1.2	5.8	1.1	0.7	0.2	1.8
sanitary pits		22.5	31.3	52.4	32.6	80.5	29.5
non-existent		0.0	0.1	0.2		0.2	0.1
other	0.1	0.1	0.1	0.1			0.1
No response	0.5	1.1	1.3	0.3	0.8	1.0	1.0
Total	100	100	100	100	100	100	100

Table 165a

Distribution of primary residences according to sources of energy for lighting (more than one source may be available) and Governorates

(165)

Sources of energy for lighting	Governorates						
	Beirut 2	Mount Lebanon	Northern Lebanon	Bekaa	Southern Lebanon	Nabatieh	Lebanon
Public electricity network	101695	370999	161808	102581	89359	52306	878748
Private electricity network	14782	187276	54314	54791	23982	7530	342674
Gas	0	8236	1758	6749	58	211	17012
Kerosene	0	794	9636	737	61	37	11265
Other source	2713	70835	30372	7094	8456	19537	139007

Table 165b

165

Percentage distribution of main residences according to sources of energy for lighting (more than one source may be available) and Governorates

Sources of energy for lighting	Governorates						
	Beirut	Mount Lebanon	Northern Lebanon	Bekaa	Southern Lebanon	Nabatieh	Lebanon
Public electricity network	100.0	99.9	99.6	99.7	99.9	100.0	99.8
Private electricity network	14.5	50.4	33.4	53.3	26.8	14.3	38.9
Gas		2.2	1.1	6.5	0.1	0.4	1.9
Kerosene		0.2	5.9	0.7	0.1	0.1	1.2
Other source	2.6	19.1	18.7	6.9	9.4	37.3	15.7

Table 166a

(166)

Distribution of primary residences according to frequency of availability of power supply from the public network for lighting and Governorates

Frequency of availability of power supply from the public network for lighting	Governorates							
	Beirut	Mount Lebanon	Northern Lebanon	Bekaa	Southern Lebanon	Nabatieh	Lebanon	
always available	98795	14769	4081	2739	4592	630	125606	
available with daily cutoffs ((once or more	936	308132	122542	84380	81675	50654	648319	()
available with weekly cut-offs (once or more	1871	47362	34801	15240	2846	971	103091) (
No response	94	736	384	222	246	53	1735	
inapplicable	0	290	536	216	64	0	1106	
Total	101696	371289	162344	102797	89423	52308	879857	

Table 166b

(166)

Percentage distribution of primary residences according to frequency of availability of power supply from the public network for lighting and Governorates

Frequency of availability of power supply from the public network for lighting	Governorates							
	Beirut	Mount Lebanon	Northern Lebanon	Bekaa	Southern Lebanon	Nabatieh	Lebanon	
always available	97.1	3.9	2.5	2.6	5.1	1.2	14.2	
available with daily cutoffs ((once or more	0.9	82.9	75.4	82.1	91.3	96.8	73.6	()
available with weekly cut-offs (once or more	1.8	12.7	21.4	14.8	3.1	1.8	11.7) (
No response	0.1	0.1	0.2	0.2	0.2	0.1	0.1	
inapplicable		0.1	0.3	0.2	0.1		0.1	
Total	100	100	100	100	100	100	100	

Table 167 a

(167)

Distribution of primary residences according to sources of energy used for cooking (more than one source may be available) and Governorates

()

Sources of energy used for cooking	Governorates							
	Beirut	Mount Lebanon	Northern Lebanon	Bekaa	Southern Lebanon	Nabatieh	Lebanon	
Gas	101602	370593	159835	102601	89423	52089	876143	
Kerosene	94	152	490	26	123	0	884	
Electricity	1216	2270	2982	3334	234	248	10284	
Firewood / Charcoal	0	622	7592	3056	409	217	11897	/

Table 167 b

(167)

Percentage distribution of primary residences according to sources of energy used for cooking (more than one source may be available) and Governorates

) () (

Sources of energy used for cooking	Governorates							
	Beirut	Mount Lebanon	Northern Lebanon	Bekaa	Southern Lebanon	Nabatieh	Lebanon	
Gas	99.9	99.8	98.4	99.8	100.0	99.5	99.5	
Kerosene	0.1	0.0	0.3	0.0	0.1		0.1	
Electricity	1.1	0.6	1.8	3.2	0.2	0.4	1.1	
Firewood / Charcoal	0.1	4.6	2.9	0.4	0.4		1.3	/

Table 168a

(168)

Distribution of primary residences according to main heating systems within the residence (more than one system may be available) and Governorates

()

Main heating systems	Governorates						
	Beirut	Mount Lebanon	Northern Lebanon	Bekaa	Southern Lebanon	Nabatieh	Lebanon
shared central heating for building	1216	4125	725	145	58	186	6455
individual electric central heating	6268	12791	429	176	678	127	20470
electric non-central heating	33212	76558	32737	504	6781	614	150407
individual central heating on gas oil	2994	21827	14867	6914	967	2118	49687
non-central heating on kerosene or gas oil	2339	51149	33139	86331	9677	28627	211262
non-central heating on gas	39481	161187	49412	1284	45148	9268	305780
non-central heating on firewood or charcoal	11040	42858	47757	12735	20337	12963	147689
other heating system	374	1014	520	498	123	164	2692
no heating system	15437	45724	8643	0	10977	233	81013

Table 168b

(168)

Percentage distribution of primary residences according to main heating systems within the residence (more than one system may be available) and Governorates

Main heating systems	Governorates						
	Beirut	Mount Lebanon	Northern Lebanon	Bekaa	Southern Lebanon	Nabatieh	Lebanon
shared central heating for building	1.1	1.1	0.4	0.1	0.1	0.3	0.7
individual electric central heating	6.1	3.4	0.2	0.1	0.7	0.2	2.3
electric non-central heating	32.6	20.6	20.1	0.4	7.5	1.1	17.1
individual central heating on gas oil	2.9	5.8	9.1	6.7	1.1	4.1	5.6
non-central heating on kerosene or gas oil	2.3	13.7	20.4	83.9	10.8	54.7	24.0
non-central heating on gas	38.8	43.4	30.4	1.2	50.4	17.7	34.7
non-central heating on firewood or charcoal	10.8	11.5	29.4	12.3	22.7	24.7	16.7
other heating system	0.3	0.2	0.3	0.4	0.1	0.3	0.3
no heating system	15.1	12.3	5.3		12.2	0.4	9.2

Table 169a

(169)

Distribution of primary residences according to way of dumping waste (more than one way may be available) and Governorates

()

Way of dumping waste	Governorates						
	Beirut	Mount Lebanon	Northern Lebanon	Bekaa	Southern Lebanon	Nabatieh	Lebanon
inside the residence	2432	35956	9601	53190	1050	127	102356
dumps near the residence	71758	258436	133789	56461	65262	48098	633805
dumps away from the residence	14314	92963	12687	27715	2123	1637	151438
private company	13659	46605	2647	18426	889	211	82438
garbage dumps	94	2405	2197	4104	16186	270	25255
in nature	0	672	6860	3838	1475	316	13161
incinerating	0	2654	8251	3489	2754	2090	19238
other ways	1778	1664	622	52	439	53	4607

Table 169b

(169)

Percentage distribution of primary residences according to way of dumping waste (more than one way may be available) and Governorates

() ()

Way of dumping waste	Governorates						
	Beirut	Mount Lebanon	Northern Lebanon	Bekaa	Southern Lebanon	Nabatieh	Lebanon
inside the residence	2.3	9.6	5.9	51.7	1.1	0.2	11.6
dumps near the residence	70.5	69.6	82.4	54.9	72.9	91.9	72.0
dumps away from the residence	14.1	25.0	7.8	26.9	2.3	3.1	17.2
private company	13.4	12.5	1.6	17.9	0.9	0.4	9.3
garbage dumps	0.1	0.6	1.3	3.9	18.1	0.5	2.8
in nature	0.1	4.2	3.7	1.6	0.6		1.4
incinerating	0.7	5.1	3.3	3.1	3.9		2.1
other way	1.7	0.4	0.3	0.1	0.4	0.1	0.5

Table 170a

(170)

Distribution of primary residences according to frequency of dumping waste and Governorates

Frequency of dumping waste	Governorates						
	Beirut	Mount Lebanon	Northern Lebanon	Bekaa	Southern Lebanon	Nabatieh	Lebanon
daily	98515	319464	99660	76279	64427	45441	703786
once to three times a week	2807	45893	51537	23657	21842	5312	151048
less than once a week	187	2658	3551	2533	444	381	9754
No response	187	2658	3551	2533	444	381	15266
Total	101696	371288	162344	102797	89423	52306	879854

Table 170b

(170)

Percentage distribution of primary residences according to frequency of dumping waste and Governorates

()

Frequency of dumping waste	Governorates						
	Beirut	Mount Lebanon	Northern Lebanon	Bekaa	Southern Lebanon	Nabatieh	Lebanon
daily	96.8	86.0	61.3	74.2	72.0	86.8	79.9
once to three times a week	2.7	12.3	31.7	23.0	24.4	10.1	17.1
less than once a week	0.1	0.7	2.1	2.4	0.4	0.7	1.1
No response	0.2	0.9	4.7	0.3	3.0	2.2	1.7
Total	100	100	100	100	100	100	100

Table 171a

(171)

Distribution of primary residences according to residence surroundings and external effects and Governorates

Surroundings and external effects to residence	Governorates						
	Beirut	Mount Lebanon	Northern Lebanon	Bekaa	Southern Lebanon	Nabatieh	Lebanon
Noise resulting from traffic or aviation							
Often	20769	56610	18723	4111	3547	2909	106669
From time to time	11695	54710	21849	19970	8475	3731	120430
Rarely	7017	48732	9964	14566	16744	1569	98592
Never	62121	211091	111482	64125	60471	44060	553350
No response	94	145	327	26	187	37	816
Total	101696	371288	162345	102798	89424	52306	879857
Noise resulting from overpopulation, heavy trade or nightclubs							
Often	6830	46746	17360	2291	4836	772	78835
From time to time	8514	53555	19912	19184	13285	3058	117508
Rarely	5520	45319	9968	14282	17422	1907	94418
Never	80739	225369	114642	67014	53693	46569	588026
No response	94	300	462	26	187	0	1069
Total	101697	371289	162344	102797	89423	52306	879856
Noise resulting from neighbors							
Often	8794	23166	16684	2301	2287	1107	54339
From time to time	9168	44168	22830	22348	12631	2493	113638
Rarely	5146	60726	11531	18071	26916	2500	124890
Never	78494	242927	110972	60051	47403	46206	586053
No response	94	302	327	26	187	0	936
Total	101696	371289	162344	102797	89424	52306	879856
Noise resulting from other sources							
Often	9168	13591	2643	651	1170	819	28042
From time to time	4304	10930	1075	866	611	323	18109
Rarely	187	14456	1015	1105	6982	223	23968
Never	84200	314173	155551	98592	80474	50889	783879
No response	3836	18139	2059	1583	187	53	25857
Total	101695	371289	162343	102797	89424	52307	879855

Surroundings and external effects to residence	Governorates						
	Beirut	Mount Lebanon	Northern Lebanon	Bekaa	Southern Lebanon	Nabatieh	Lebanon
Presence of road works in the vicinity hindering mobility							
Yes, excessively	6923	13871	18850	7750	1310	3948	52652
Yes, a little	9356	51946	35100	21007	4158	12852	134419
No	85323	304044	107563	73545	83216	35131	688822
No response	94	1428	831	495	740	375	3963
Total	101696	371289	162344	102797	89424	52306	879856
Presence of pits and neglected roads in the vicinity that cause damage or harm							
Yes, excessively	1403	19633	23653	22244	1614	4695	73242
Yes, a little	3087	81761	35526	22518	4228	13057	160177
No	97018	268386	102089	57597	82780	34126	641996
No response	187	1509	1075	438	801	428	4438
Total	101695	371289	162343	102797	89423	52306	879853

Table 171b

(171)

Percentage distribution of primary residences according to residence surroundings and external effects and Governorates

()

Surroundings and external effects to residence	Governorates						
	Beirut	Mount Lebanon	Northern Lebanon	Bekaa	Southern Lebanon	Nabatieh	Lebanon
Noise resulting from traffic or aviation							
Often	20.4	15.2	11.5	4.0	3.9	5.5	12.1
From time to time	11.5	14.7	13.4	19.4	9.4	7.1	13.6
Rarely	6.9	13.1	6.1	14.1	18.7	3.0	11.2
Never	61.1	56.8	68.6	62.3	67.6	84.2	62.8
No response	0.1	0.0	0.2	0.0	0.2	0.1	0.1
Total	100	100	100	100	100	100	100
Noise resulting from overpopulation, heavy trade or nightclubs							
Often	6.7	12.5	10.6	2.2	5.4	1.4	8.9
From time to time	8.3	14.4	12.2	18.6	14.8	5.8	13.3
Rarely	5.4	12.2	6.1	13.8	19.4	3.6	10.7
Never	79.3	60.7	70.6	65.1	60.0	89.0	66.8
No response	0.1	0.1	0.2	0.0	0.2		0.1
Total	100	100	100	100	100	100	100
Noise resulting from neighbors							
Often	8.6	6.2	10.2	2.2	2.5	2.1	6.1
From time to time	9.0	11.8	14.1	21.7	14.1	4.7	12.9
Rarely	5.1	16.3	7.1	17.5	30.1	4.7	14.1
Never	77.1	65.4	68.3	58.4	53.0	88.3	66.6
No response	0.1	0.1	0.2	0.0	0.2		0.1
Total	100	100	100	100	100	100	100
Noise resulting from other sources							
Often	9.0	3.6	1.6	0.6	1.3	1.5	3.1
From time to time	4.2	2.9	0.6	0.8	0.6	0.6	2.1
Rarely	0.1	3.8	0.6	1.1	7.8	0.4	2.7
Never	82.7	84.6	95.8	95.9	89.9	97.2	89.1
No response	3.8	4.9	1.3	1.5	0.2	0.1	2.9
Total	100	100	100	100	100	100	100

Surroundings and external effects to residence	Governorates						
	Beirut	Mount Lebanon	Northern Lebanon	Bekaa	Southern Lebanon	Nabatieh	Lebanon
Presence of road works in the vicinity hindering mobility							
Yes, excessively	6.8	3.7	11.6	7.5	1.4	7.5	5.9
Yes, a little	9.2	13.9	21.6	20.4	4.6	24.5	15.2
No	83.9	81.8	66.2	71.5	93.1	67.1	78.2
No response	0.1	0.3	0.5	0.4	0.8	0.7	0.4
Total	100	100	100	100	100	100	100
Presence of pits and neglected roads in the vicinity that cause damage or harm							
Yes, excessively	1.3	5.2	14.5	21.6	1.8	8.9	8.3
Yes, a little	3.0	22.0	21.8	21.9	4.7	24.9	18.2
No	95.4	72.2	62.8	56.0	92.5	65.2	72.9
No response	0.1	0.4	0.6	0.4	0.8	0.8	0.5
Total	100	100	100	100	100	100	100

Table 172a

(172)

Distribution of primary residences according to availability of private roofed garage or within the building and Governorates

Availability of private roofed garage or within the building	Governorates						
	Beirut	Mount Lebanon	Northern Lebanon	Bekaa	Southern Lebanon	Nabatieh	Lebanon
Yes	22641	100439	13789	13053	6039	6212	162173
No	78961	268897	147835	88856	82470	45602	712621
No response	94	1953	719	888	915	493	5062
Total	101696	371289	162343	102797	89424	52307	879856

Table 172b

(172)

Percentage distribution of primary residences according to availability of private roofed garage or within the building and Governorates

()

Availability of private roofed garage or within the building	Governorates						
	Beirut	Mount Lebanon	Northern Lebanon	Bekaa	Southern Lebanon	Nabatieh	Lebanon
Yes	22.2	27.1	8.4	12.6	6.7	11.8	18.4
No	77.6	72.4	91.1	86.4	92.2	87.1	80.9
98145.451	0.1	0.5	0.4	0.8	1.0	0.9	0.5
Total	100	100	100	100	100	100	100

Table 173a

(173)

Distribution of primary residences according to availability of uncovered parking lots and Governorates

Availability of uncovered parking lots	Governorates						
	Beirut	Mount Lebanon	North-ern Lebanon	Bekaa	South-ern Lebanon	Naba-tieh	Leba-non
Yes	16747	154321	72070	82278	57719	37584	420719
No	84762	213082	87765	19392	30120	12793	447914
No response	187	3885	2509	1127	1584	1929	11221
Total	101696	371288	162344	102797	89423	52306	879854

Table 173b

(173)

Percentage distribution of primary residences according to availability of uncovered parking lots and Governorates

()

Availability of uncovered parking lots	Governorates						
	Beirut	Mount Lebanon	North-ern Lebanon	Bekaa	South-ern Lebanon	Naba-tieh	Leba-non
Yes	16.4	41.5	44.3	80.0	64.5	71.8	47.8
No	83.3	57.3	54.1	18.8	33.6	24.4	50.9
No response	0.1	1.0	1.5	1.1	1.7	3.6	1.2
Total	100	100	100	100	100	100	100

Table 174 a

(174)

Distribution of primary residences according to availability of services within 10 minute walk from the residence and Governorates

10

Services	Governorates							
	Beirut	Mount Lebanon	Northern Lebanon	Bekaa	Southern Lebanon	Naba-tieh	Lebanon	
Yes, more than one	99824	292399	119440	73677	55975	38801	680116	
Yes, only one	1590	51548	35766	23350	26159	9171	147584	
Unavailable	281	27038	7050	5770	7289	4282	51710	
Don't know	0	228	0	0	0	53	281	
No response	0	75	88	0	0	0	163	
Grocery Total	101695	371288	162344	102797	89423	52307	879854	
Yes, more than one	97953	251131	93148	39599	43962	26947	552740	
Yes, only one	2900	77146	38404	43421	34155	18171	214197	
Unavailable	748	42495	30616	19751	11306	7188	112104	
Don't know	94	297	88	26	0	0	505	
No response	0	220	88	0	0	0	308	
Bakery (pastries; manakish, (...fatayer) Total	101695	371289	162344	102797	89423	52306	879854	(...)
Yes, more than one	72880	100859	68735	28513	22635	17358	310980	
Yes, only one	11040	118193	65851	56939	36034	20827	308884	
Unavailable	13940	136769	26816	17195	30564	14069	239353	
Don't know	3836	15248	853	150	190	53	20330	
No response	0	220	88	0	0	0	308	
Elementary public school Total	101696	371289	162343	102797	89423	52307	879855	

		Governorates						
		Beirut	Mount Lebanon	Northern Lebanon	Bekaa	Southern Lebanon	Naba-tieh	Lebanon
Services	Yes, more than one	96831	160946	56694	28767	21979	13364	378581
	Yes, only one	4304	126496	42057	32762	35961	14903	256483
	Unavailable	561	83391	63339	41268	31484	23987	244030
	Don't know	0	381	165	0	0	53	599
	No response	0	75	88	0	0	0	163
	Pharmacy	Total	101696	371289	162343	102797	89424	52307
Private clinic	Yes, more than one	93369	185676	54995	28725	23310	20795	406870
	Yes, only one	3649	64997	32004	32804	31738	10728	175920
	Unavailable	3368	114204	74430	41196	34375	20625	288198
	Don't know	1310	6336	826	72	0	105	8649
	No response	0	75	88	0	0	53	216
	Private clinic	Total	101696	371288	162343	102797	89423	52306
Dispensary	Yes, more than one	63337	97367	41362	22908	17561	10894	253429
	Yes, only one	21518	108416	34407	38817	37318	18336	258812
	Unavailable	11227	151858	85182	40890	34544	22934	346635
	Don't know	5613	13573	1129	182	0	143	20640
	No response	0	75	264	0	0	0	339
	Dispensary	Total	101695	371289	162344	102797	89423	52307
Hospital	Yes, more than one	27412	53403	23248	12036	16129	1225	133453
	Yes, only one	42474	60274	16691	5044	8854	1290	134627
	Unavailable	31528	254949	121981	85565	64440	49792	608255
	Don't know	281	2588	336	152	0	0	3357
	No response	0	75	88	0	0	0	163
	Hospital	Total	101695	371289	162344	102797	89423	52307

Table 174b

(174)

Percentage distribution of primary residences according to
Availability of services within 10 minute walk from the resi-
dence and Governorates

10

Services	Governorates							
	Beirut	Mount Leba- non	Northern Lebanon	Bekaa	Southern Lebanon	Naba- tieh	Lebanon	
	Yes, more than one	98.1	78.7	73.5	71.6	62.5	74.1	77.2
	Yes, only one	1.5	13.8	22.0	22.7	29.2	17.5	16.7
	Unavailable	0.2	7.2	4.3	5.6	8.1	8.1	5.8
	Don't know		0.1				0.1	0.0
	No response		0.0	0.1				0.0
Grocery	Total	100	100	100	100	100	100	100
	Yes, more than one	96.3	67.6	57.3	38.5	49.1	51.5	62.8
	Yes, only one	2.8	20.7	23.6	42.2	38.1	34.7	24.3
	Unavailable	0.7	11.4	18.8	19.2	12.6	13.7	12.7
	Don't know	0.1	0.1	0.1	0.0			0.1
Bakery (pastries; manakish, (...fatayer	No response		0.1	0.1				0.0
	Total	100	100	100	100	100	100	100
	Yes, more than one	71.6	27.1	42.3	27.7	25.3	33.1	35.3
	Yes, only one	10.8	31.8	40.5	55.3	40.2	39.8	35.1
	Unavailable	13.7	36.8	16.5	16.7	34.1	26.8	27.2
	Don't know	3.7	4.1	0.5	0.1	0.2	0.1	2.3
	No response		0.1	0.1				0.0
Elemen- tary public school	Total	100	100	100	100	100	100	100

		Governorates						
		Beirut	Mount Leba- non	Northern Lebanon	Bekaa	Southern Lebanon	Naba- tiah	Lebanon
Pharmacy	Yes, more than one	91.8	50.0	33.8	27.9	26.1	39.7	43.0
	Yes, only one	3.5	17.5	19.7	31.9	35.4	20.5	29.1
	Unavailable	3.3	30.7	45.8	40.1	38.4	39.4	27.7
	Don't know	1.2	1.7	0.5	0.1		0.2	0.1
	No response		0.0	0.1				0.0
	Total	100	100	100	100	100	100	100
Private clinic	Yes, more than one	91.8	50.0	33.8	27.9	26.1	39.7	46.2
	Yes, only one	3.5	17.5	19.7	31.9	35.4	20.5	19.9
	Unavailable	3.3	30.7	45.8	40.1	38.4	39.4	32.7
	Don't know	1.2	1.7	0.5	0.1		0.2	0.9
	No response		0.0	0.1			0.1	0.0
	Total	100	100	100	100	100	100	100
Dispensary	Yes, more than one	62.2	26.2	25.4	22.2	19.6	20.8	28.8
	Yes, only one	21.1	29.2	21.1	37.7	41.7	35.1	29.4
	Unavailable	11.0	40.9	52.4	39.7	38.6	43.8	39.3
	Don't know	5.5	3.6	0.6	0.1		0.2	2.3
	No response		0.0	0.1				0.0
	Total	100	100	100	100	100	100	100
Hospital	Yes, more than one	26.9	14.3	14.3	11.7	18.0	2.3	15.1
	Yes, only one	41.7	16.2	10.2	4.9	9.9	2.4	15.3
	Unavailable	31.0	68.6	75.1	83.2	72.1	95.1	69.1
	Don't know	0.2	0.6	0.2	0.1			0.3
	No response		0.0	0.1				
	Total	100	100	100	100	100	100	100

Table 175a

(175)

Distribution of primary residences according to availability of home appliances, audio-visual appliances (more than one may be available) and Governorates

Home and audio-visual appliances	Governorates						
	Beirut	Mount Lebanon	Northern Lebanon	Bekaa	Southern Lebanon	Nabatieh	Lebanon
Refrigerator	100760	366479	159624	101542	88386	52058	868849
Independent freezer	5894	10700	4738	2494	1756	1216	26798
Burners for cooking with an electrical or gas operated oven	91872	321621	94074	92511	62792	28306	691176
Burners for cooking without an electric or gas operated oven	9262	49807	69314	12868	27436	23616	192303
Independent electric oven	6362	21734	5215	31373	763	763	66209
Microwave	50333	122188	20558	19057	10454	6921	229511
Semi or full automatic washing machine	40510	169698	112219	54206	61117	31225	468975
Automatic washing machine	58005	186353	42912	51325	24247	15372	378214
Dryer	5052	22788	1804	4583	190	329	34745
Dishwasher	5988	12520	2670	2585	298	419	24478
Vacuum cleaner	80645	261194	81285	75901	40198	30061	569285
Television	101228	363696	158811	101504	87591	49543	862373
Video player	42849	140490	62695	33430	30585	14429	324478
DVD player	19927	48873	10209	9103	4228	4044	96384
Private satellite dish	4210	12837	12880	9729	6597	9354	55606
Radio or radio with tape recorder (with or without CD player)	77184	288507	113864	84063	63353	36273	663242
Video camera	12817	34338	7467	7897	4143	2335	68996
Photographic camera	44439	136274	24056	27293	20201	13874	266137
Computer	41445	105928	21507	17759	13416	10317	210372
Musical Instrument	10946	24467	3471	5166	1640	1138	46828
Iron	97111	355626	144241	101103	86529	46801	831412
Air conditioner	54263	127664	29790	3846	13296	5197	234055
Water heating system	90562	299821	144060	75883	56009	48390	714725

Table 175b

(175)

Percentage distribution of primary residences according to availability of home appliances, audio-visual appliances (more than one may be available) and Governorates

Home and audio-visual appliances	Governorates						
	Beirut	Mount Lebanon	Northern Lebanon	Bekaa	Southern Lebanon	Nabatieh	Lebanon
Refrigerator	99.1	98.7	98.3	98.7	98.8	99.5	98.7
Independent freezer	5.7	2.8	2.9	2.4	1.9	2.3	3.0
Burners for cooking with an electric or gas operated oven	90.3	86.6	57.9	89.9	70.2	54.1	78.5
Burners for cooking without an electric or gas operated oven	9.1	13.4	42.6	12.5	30.6	45.1	21.8
Independent electric oven	6.2	5.8	3.2	30.5	0.8	1.4	7.5
Microwave	49.4	32.9	12.6	18.5	11.6	13.2	26.1
Semi or full automatic washing machine	39.8	45.7	69.1	52.7	68.3	59.6	53.3
Automatic washing machine	57.0	50.1	26.4	49.9	27.1	29.3	42.9
Dryer	4.9	6.1	1.1	4.4	0.2	0.6	3.9
Dishwasher	5.8	3.3	1.6	2.5	0.3	0.8	2.7
Vacuum cleaner	79.3	70.3	50.1	73.8	44.9	57.4	64.7
Television	99.5	97.9	97.8	98.7	97.9	94.7	98.0
Video player	42.1	37.8	38.6	32.5	34.2	27.5	36.8
DVD player	19.5	13.1	6.2	8.8	4.7	7.7	10.9
Private satellite dish	4.1	3.4	7.9	9.4	7.3	17.8	6.3
Radio or radio with tape recorder (with or without CD player)	75.8	77.7	70.1	81.7	70.8	69.3	75.3
Video camera	12.6	9.2	4.6	7.6	4.6	4.4	7.8
Photographic camera	43.6	36.7	14.8	26.5	22.5	26.5	30.2
Computer	40.7	28.5	13.2	17.2	15.0	19.7	23.9
Musical Instrument	10.7	6.5	2.1	5.0	1.8	2.1	5.3
Iron	95.4	95.7	88.8	98.3	96.7	89.4	94.4
Air conditioner	53.3	34.3	18.3	3.7	14.8	9.9	26.6
Water heating system	89.1	80.7	88.7	73.8	62.6	92.5	81.2

Table 176a

(176)

Distribution of primary residences according to household head's possession of a cell phone line and Governorates

Possession of cell phone line	Governorates						
	Beirut	Mount Lebanon	Northern Lebanon	Bekaa	Southern Lebanon	Nabatieh	Lebanon
Yes	53514	188322	39958	32503	24590	15347	354234
No	47994	182748	122230	70294	64711	36923	524900
Total	101508	371070	162188	102797	89301	52270	879134

Table 176b

(176)

Percentage distribution of primary residences according to household head's possession of a cell phone line and Governorates

Possession of cell phone line	Governorates						
	Beirut	Mount Lebanon	Northern Lebanon	Bekaa	Southern Lebanon	Nabatieh	Lebanon
Yes	52.7	50.7	24.6	31.6	27.5	29.3	40.2
No	47.2	49.2	75.3	68.3	72.4	70.6	59.7
Total	100	100	100	100	100	100	100

Table 177 a

(177)

Distribution of primary residences according to subscription to satellite dish services and Governorates

Subscription to satellite dish services	Governorates						
	Beirut	Mount Lebanon	Northern Lebanon	Bekaa	Southern Lebanon	Nabatieh	Lebanon
Yes	82329	261242	91538	38895	42504	12292	528800
No	19273	109822	70738	63902	46861	40014	350610
No response	94	224	68	0	58	0	444
Total	101696	371288	162344	102797	89423	52306	879854

Table 177 b

(177)

Percentage distribution of main residences according to subscription to satellite dish services and Governorates

()

Subscription to satellite dish services	Governorates						
	Beirut	Mount Lebanon	Northern Lebanon	Bekaa	Southern Lebanon	Nabatieh	Lebanon
Yes	80.9	70.3	56.3	37.8	47.5	23.5	60.1
No	18.9	29.5	43.5	62.1	52.4	76.5	39.8
No response	0.1	0.1	0.0		0.1		0.1
Total	100	100	100	100	100	100	100

Table 178a

(178)

Distribution of primary residences according to subscription to internet services and Governorates

Subscription to internet services	Governorates						
	Beirut	Mount Lebanon	Northern Lebanon	Bekaa	Southern Lebanon	Nabatieh	Lebanon
Yes	12256	18421	3916	2630	1745	425	39393
No	89440	352644	158174	100167	87619	51845	839889
No response	0	224	253	0	58	37	572
Total	101696	371289	162343	102797	89422	52307	879854

Table 178b

(178)

Percentage distribution of primary residences according to subscription to internet services and Governorates

()

Subscription to internet services	Governorates						
	Beirut	Mount Lebanon	Northern Lebanon	Bekaa	Southern Lebanon	Nabatieh	Lebanon
Yes	12.1	4.9	2.4	2.5	1.9	0.8	4.4
No	87.9	94.9	97.4	97.4	97.9	99.1	95.4
No response		0.1	0.1		0.1	0.1	0.1
Total	100	100	100	100	100	100	100

Table 179a

(179)

Distribution of primary residences according to availability of at least one car and Governorates

Availability of car	Governorates						
	Beirut	Mount Lebanon	Northern Lebanon	Bekaa	Southern Lebanon	Nabatieh	Lebanon
Yes	59782	220031	62124	55286	37920	26849	461992
No	41913	151258	100220	47511	51503	25458	417863
Total	101695	371289	162344	102797	89423	52307	879855

Table 179b

(179)

Percentage distribution of primary residences according to availability of at least one car and Governorates

()

Availability of car	Governorates						
	Beirut	Mount Lebanon	Northern Lebanon	Bekaa	Southern Lebanon	Nabatieh	Lebanon
Yes	58.7	59.2	38.2	53.7	42.4	51.3	52.5
No	41.2	40.7	61.7	46.2	57.5	48.6	47.4
Total	100	100	100	100	100	100	100