

PART VII – SOCIAL SERVICES

19. EDUCATION

The Centre de Recherche et de Développement Pédagogique provides CAS with education statistics which deal with vocational and higher education.

Vocational education human resources

Vocational education in the academic year 2008/2009:

- Total schools: 447 schools.
- Total human resources: 18,646 employees:
 - Females: 45.9% of total human resources.
 - Managers: 6.7% of total human resources.
 - Teachers: 93.3% of total human resources.

Table 19.1 – Vocational education in Lebanon. Human resources in 2008/2009

Vocational education	Schools. %	Human resources. %	Females. %	Managers. %	Teachers. %
Public	22.4	62.8	61.0	49.7	63.7
Private	77.6	37.2	39.0	50.3	36.3
Total. Number	447	18,646	8,558	1,258	17,388

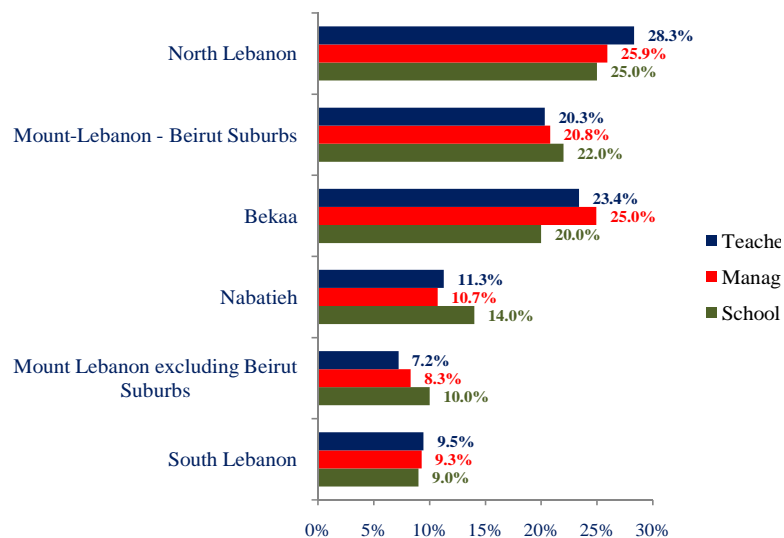
Table made by CAS based on the Centre de Recherche et de Développement Pédagogique data (2008/2009)

Public vocational education human resources

In the academic year 2008/2009, 100 official vocational education schools recruit 11,082 teachers and 625 managers:

- Peak Mohafazat:
 - Schools: North Lebanon (25.0% of schools).
 - Human resources: North Lebanon (28.2% of human resources):
 - Managers: North Lebanon (25.9% of managers).
 - Teachers: North Lebanon (28.3% of teachers).
- Females: 41.6% of total human resources.

Graph 19.1 – Public vocational schools human resources by Mohafazat. % in 2008/2009



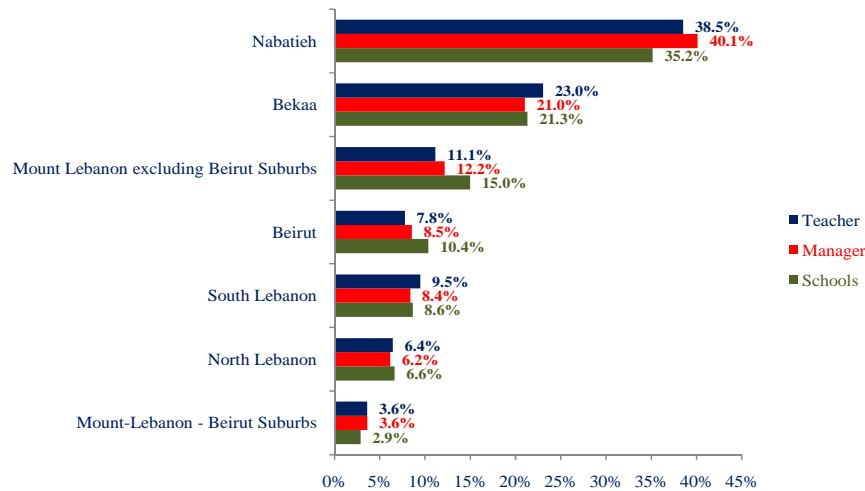
Graph made by CAS based on the Centre de Recherche et de Développement Pédagogique data (2008/2009)

Private vocational education human resources

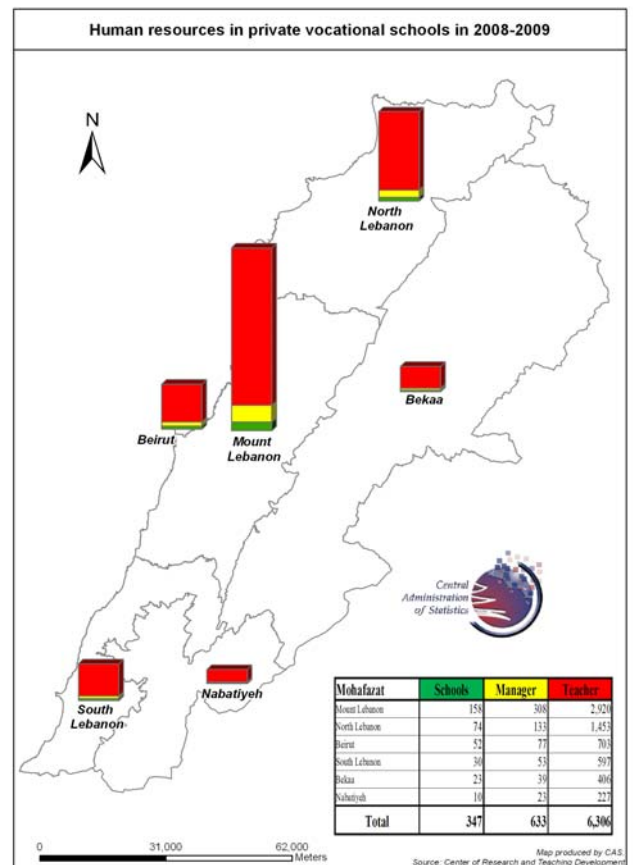
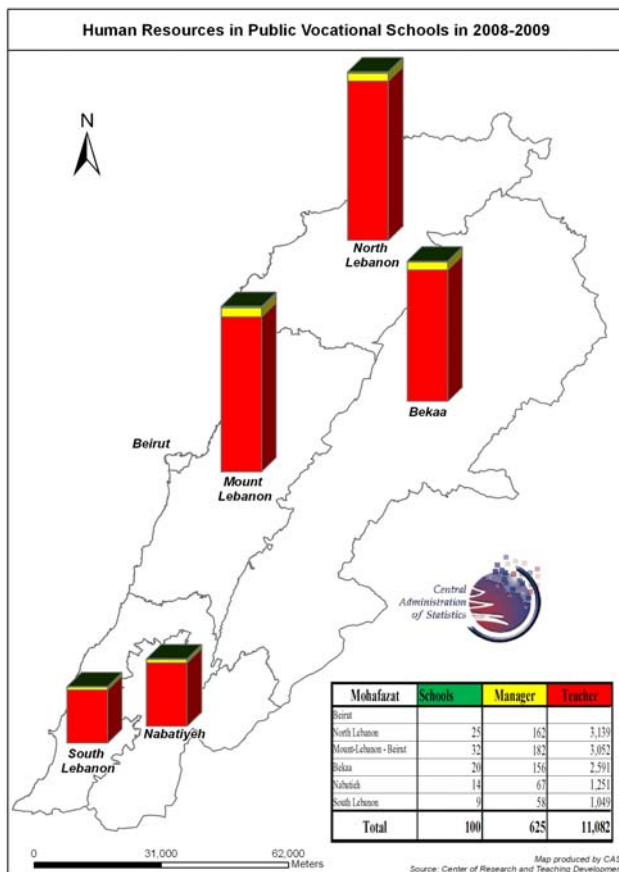
In the academic year 2008/2009, 347 public vocational education schools recruit 6,306 teachers and 633 managers:

- Peak Mohafazat:
 - Schools: Mount-Lebanon - Beirut Suburbs (35.2% of schools).
 - Human resources: Mount-Lebanon - Beirut Suburbs (38.7% of human resources):
 - Managers: Mount-Lebanon - Beirut Suburbs (40.1% of managers).
 - Teachers: Mount-Lebanon - Beirut Suburbs (38.5% of teachers).
- Females: 48.1% of total human resources.

Graph 19.2 – Private vocational schools human resources by Mohafazat. % in 2008/2009



Graph made by CAS based on the Centre de Recherche et de Développement Pédagogique data (2008/2009)



Vocational education students

In the academic year 2008/2009, there are 115,407 vocational education students:

- Females: 48.0% of students.
- Official diplomas: 76.2% of total students.
- Other private diplomas: 23.8% of total students.
- Public schools:
 - Students: 36.8% of total students.
 - Official diplomas: 48.3% of total students.
- Private schools:
 - Students: 63.2%.
 - Official diplomas: 51.7% of total students.
 - Other private diplomas: 100.0% of students of other private diplomas.

Table 19.2 – Vocational education in Lebanon. Students in 2008/2009

Vocational education	Public. %	Private. %	Total. Numbers
Aptitude	30.9	69.1	754
Intermediate	49.3	50.7	10,736
Secondary	90.1	9.9	1,460
Technical Bacalaureate.	44.1	55.9	49,652
TS	49.9	50.1	22,415
Technical diploma	100.0	0.0	2,343
Teaching diploma	100.0	0.0	151
LT	0.0	100.0	450
Total of official diplomas	48.3	51.7	87,961
Private certificates for 3 months	0.0	100.0	9,335
Private certificates for 1 year	0.0	100.0	18,111
Total students	36.8	63.2	115,407

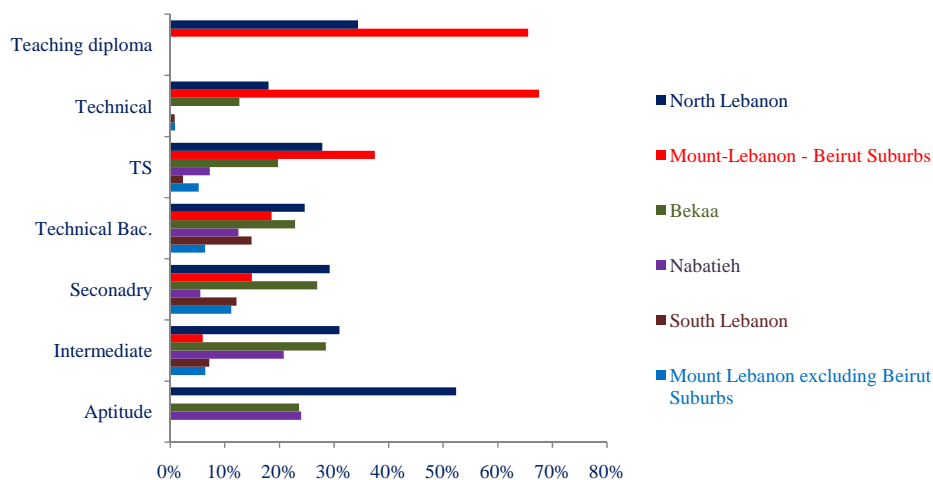
Table made by CAS based on the Centre de Recherche et de Développement Pédagogique data (2008/2009)

Public vocational education students

In the academic year 2008/2009, 42,444 students in public schools obtained official diplomas:

- Peaks:
 - North-Lebanon: 26.3% of total students.
 - Technical Bacalaureate: 51.6% of total students
- Females: 47.0% of total students.

Graph 19.3 – Public vocational schools students by Mohafazat. % in 2008/2009



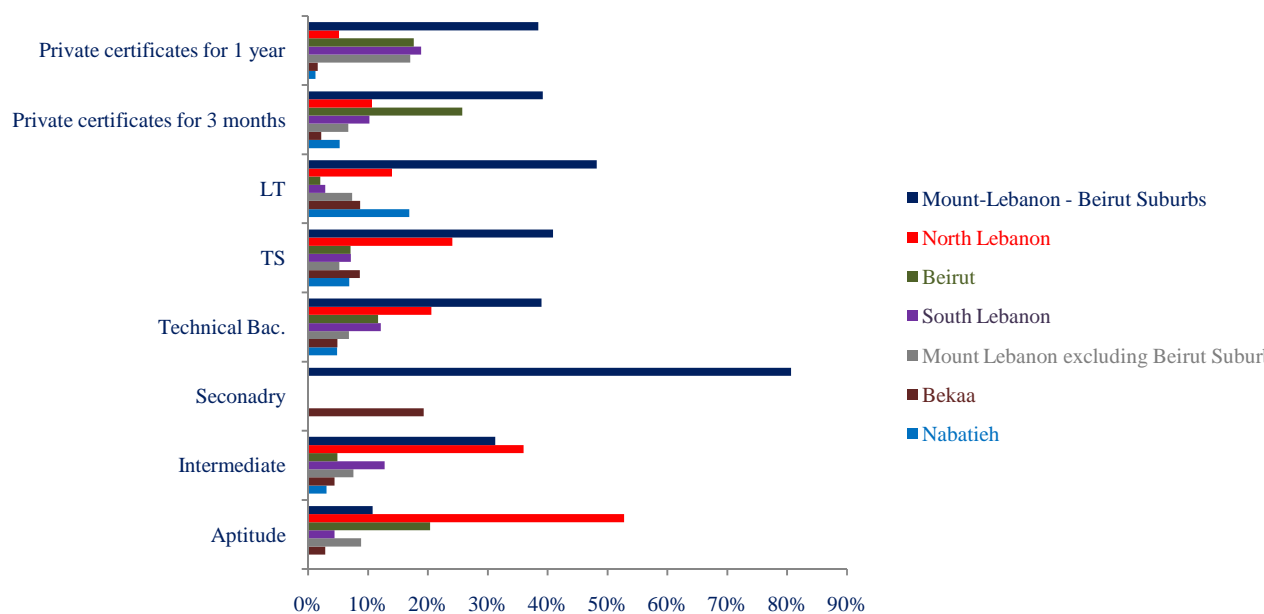
Graph made by CAS based on the Centre de Recherche et de Développement Pédagogique data (2008/2009)

Private vocational education students

In the academic year 2008/2009, 72,963 students enrolled in private schools obtained diplomas:

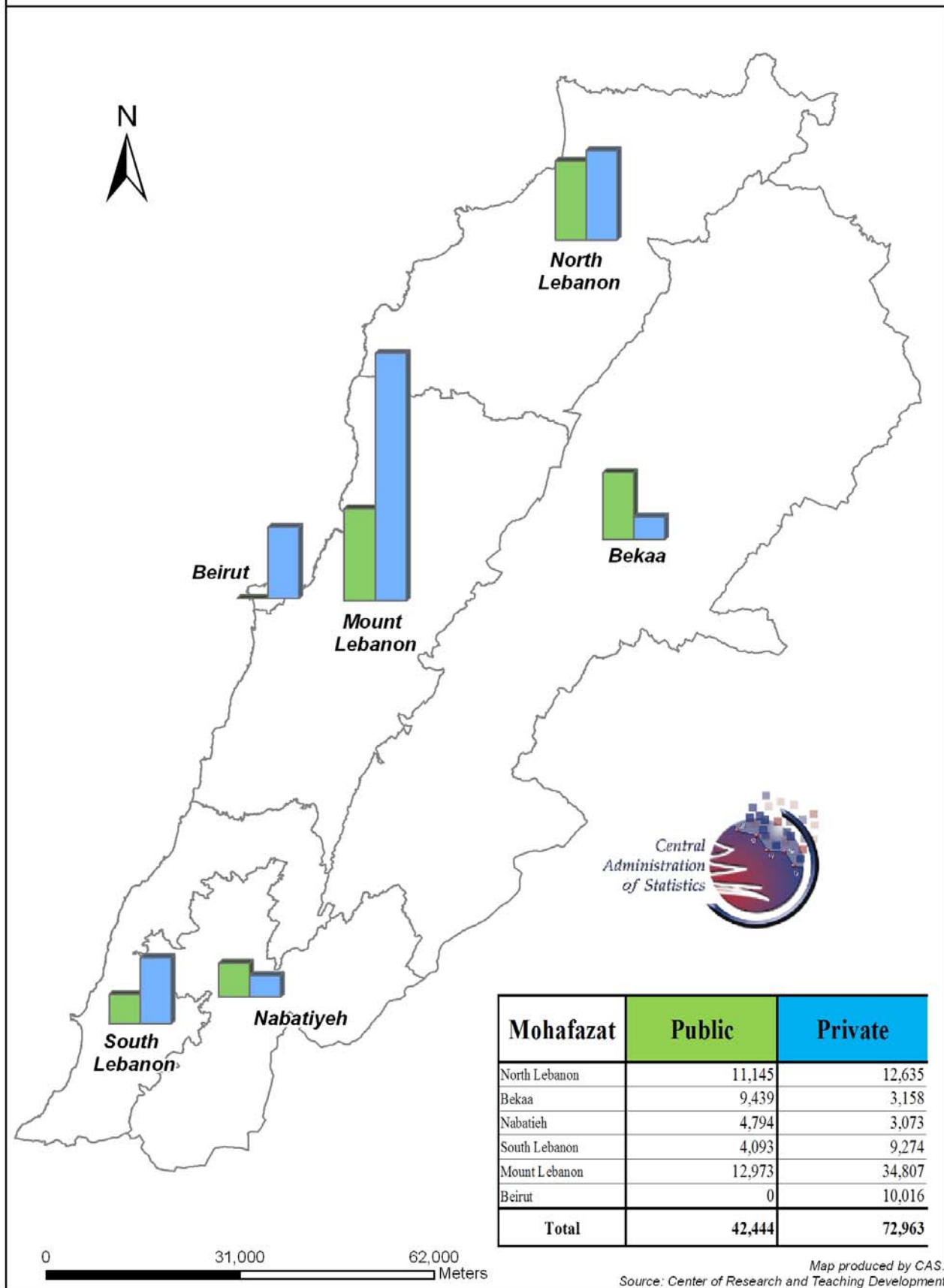
- Peaks:
 - Mount-Lebanon and suburbs: 38.5% of total students.
 - Among official diplomas: Technical Bacallaureate: 60.9% of total students.
 - Among all diplomas: Technical Bacallaureate: 38.0% of total students.
- Statistics by sex:
 - Among official diplomas: Females: 44.4% of total students.
 - Among all diplomas: Females: 48.6% of total students.

Graph 19.4 – Private vocational schools students by Mohafazat. % in 2008/2009



Graph made by CAS based on the Centre de Recherche et de Développement Pédagogique data (2008/2009)

Number of diplomas students in public and private institutions in 2008-2009



Higher education

In 2009, 174,297 students enrolled in universities operating in Lebanon:

- Females: 53.4% of total students.
- Nationality statistics: Foreigners: 14.5% of total students.

In 2009, 21,631 human resources worked in universities operating in Lebanon:

- Managers: 27.8% of total human resources.
- Teachers: 72.2% of total human resources.
- Females: 39.5% of total human resources.

In 2009, 6,023 managers worked in universities operating in Lebanon:

- Females: 49.2% of total managers.

In 2009, 15,608 teachers taught in universities operating in Lebanon:

- Females: 35.7% of total teachers.

In 2009, managers and teachers worked in universities operating in Lebanon:

- Females: 35.7% of total teachers.

Table 19.3 – Higher education in Lebanon. Top eight universities in 2008/2009

University	Students	University students / Total students. %	Managers	University managers / Total managers. %	Teachers	University teachers / Total teachers. %
Lebanese University	74,134	42.5	2,503	41.6	4,822	30.9
Université Saint-Joseph	9,631	5.5	441	7.3	2,091	13.4
Université Saint-Esprit Kaslik	6,897	4.0	107	1.8	946	6.1
American University of Beirut	7,264	4.2	373	6.2	945	6.1
Balamand University	3,546	2.0	74	1.2	853	5.5
Beirut Arab University	15,333	8.8	538	8.9	760	4.9
Lebanese International University	11,138	6.4	389	6.5	724	4.6
Notre Dame University	5,872	3.4	40	0.7	569	3.6
Total top eight universities	133,815	76.8	4,465	74.1	11,710	75.0
Total	174,297	100.0	6,023	100.0	15,608	100.0

Table made by CAS based on the Centre de Recherche et de Développement Pédagogique data (2008/2009)

ISCED

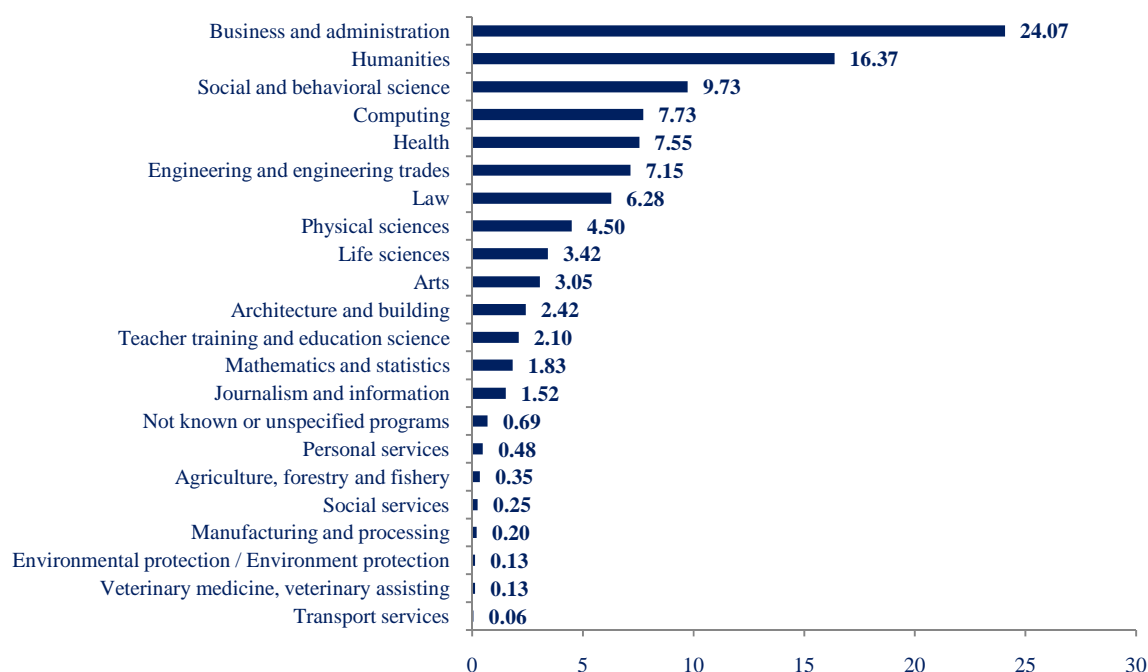
The International Standard Classification of Education (ISCED) classifies students by major of study in higher education.

Table 19.4 – Higher education in Lebanon. Top three programs in 2008/2009

ISCED	Program	Female students	Females. %	Male students	Males. %	Total students	%
34	Business and administration	19,727	21.2	22,227	27.4	41,954	24.1
22	Humanities	18,565	19.9	9,959	12.3	28,524	16.4
31	Social and behavioral science	12,695	13.6	4,263	5.2	16,958	9.7
	Top three majors	50,987	54.8	36,449	44.9	87,436	50.2
	Total	93,096	100.0	81,201	100.0	174,297	100.0

Table made by CAS based on the Centre de Recherche et de Développement Pédagogique data (2008/2009)

Graph 19.5 – Higher education students by ISCED. % in 2008/2009



Graph made by CAS based on the Centre de Recherche et de Développement Pédagogique data (2008/2009)

Education in Lebanon

Finally, we sketch a general dashboard of education in Lebanon for the academic year 2008/2009.

Table 19.5 – General education dashboard in Lebanon in 2008/2009

Type of establishment	Establishments	Students	Teachers	Managers
Vocational education				
Public schools	100	42,444	11,082	625
Private schools	347	72,963	6,306	633
Total vocational education	447	115,407	17,388	1,258
Higher education				
Public universities	1	74,134	4,822	2,503
Private universities	37	100,163	10,786	3,520
Total higher education	38	174,297	15,608	6,023

Table made by CAS based on the Centre de Recherche et de Développement Pédagogique data (2008/2009)