

PART I – RESIDENTS

1. RESIDENTS 2011 - 2013

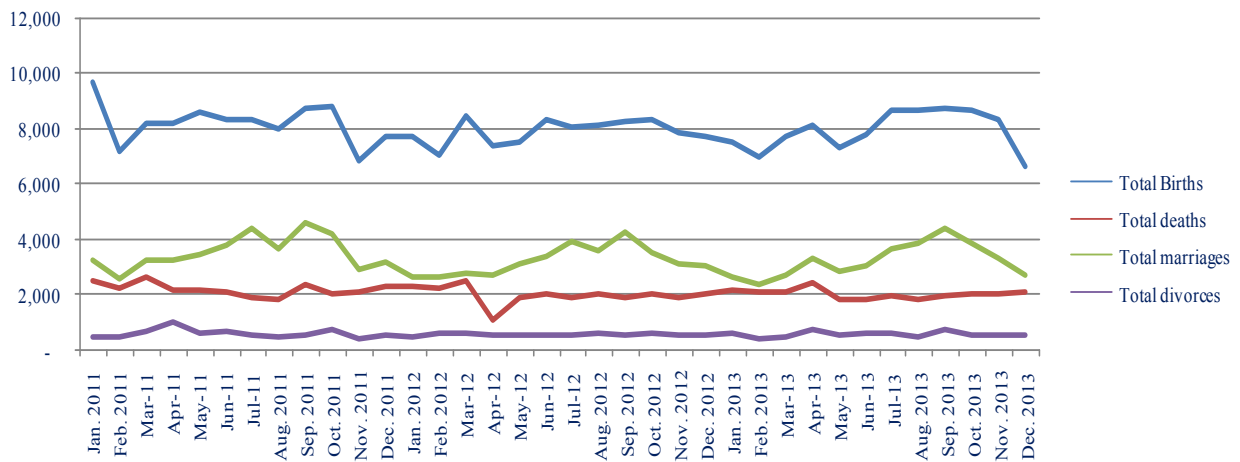
Residents in Lebanon include vital statistics, work permits, and crimes.

Vital statistics

Vital statistics showed the following for the period January 2011 – December 2013:

- 288,657 births
- 75,535 deaths
- 119,258 marriages
- 20,201 divorces.

Graph 1.1 – Vital statistics. Frequency in 2011 - 2013



Graph made by CAS based on the General Directorate of Interior Security Forces data (2011 - 2013)

Vital statistics – Births

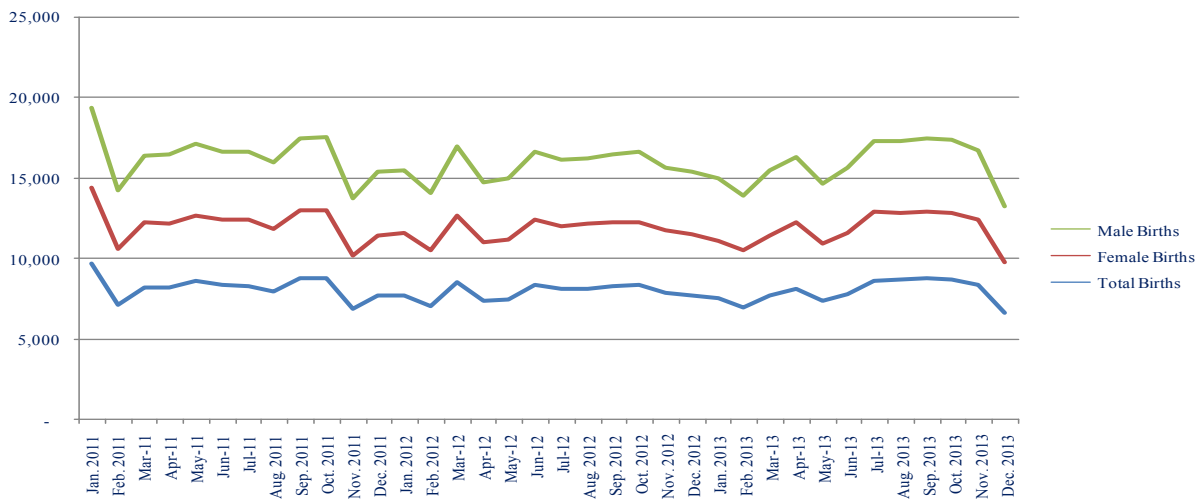
Among the 288,657 births for the period January 2011 – December 2013, 48.7% were females and 51.3% were males. In addition, 34.1% of all these births occurred in 2011, 32.9% in 2012, and 33.0% in 2013.

Table 1.1 – Births statistics by sex and by year. January 2011 – December 2013

2011			2012			2013		
Total births. Number	Females. Per cent	Males. Per cent	Total births. Number	Females. Per cent	Males. Per cent	Total births. Number	Females. Per cent	Males. Per cent
98,659	48.6%	54.4%	94,842	49.1%	50.9%	95,246	48.5%	51.5%

Table made by CAS based on the General Directorate of Interior Security Forces data (2011 - 2013)

Graph 1.2 – Births. Frequency in 2011 - 2013



Graph made by CAS based on the General Directorate of Interior Security Forces data (2011 - 2013)

Vital statistics – Deaths

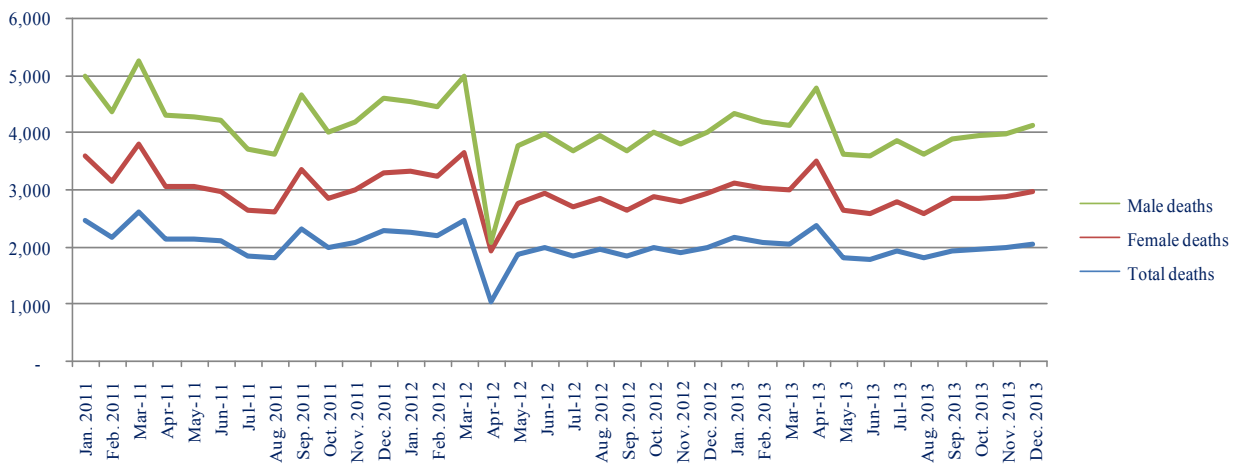
Among the 75,535 deaths for the period January 2011 – December 2013, 45.5% were females and 54.5% were males. In addition, 35.5% of all these deaths occurred in 2011, 31.9% in 2012, and 32.7% in 2013.

Table 1.2 – Deaths statistics by sex and by year. January 2011 – December 2013

2011			2012			2013		
Total deaths. Number	Females. Per cent	Males. Per cent	Total deaths. Number	Females. Per cent	Males. Per cent	Total deaths. Number	Females. Per cent	Males. Per cent
26,070	43.5%	56.5%	23,452	47.9%	52.1%	24,013	45.2%	54.8%

Table made by CAS based on the General Directorate of Interior Security Forces data (2011 - 2013)

Graph 1.3 – Deaths. Frequency in 2011 - 2013

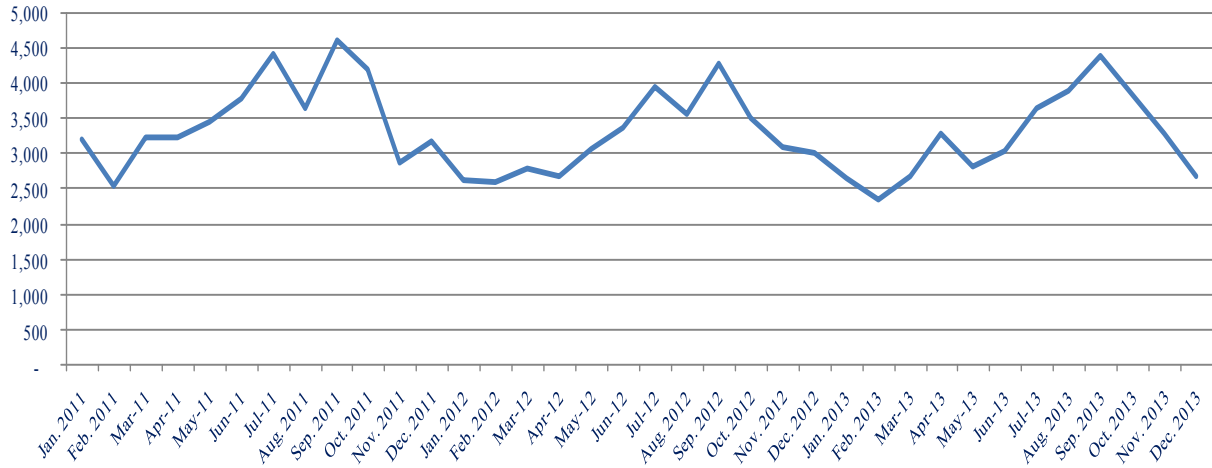


Graph made by CAS based on the General Directorate of Interior Security Forces data (2011 - 2013)

Vital statistics – Marriages

Among the 119,928 marriages for the period January 2011 – December 2013, 35.4% occurred in 2011, 32.3% in 2012, and 32.3% in 2013.

Graph 1.4 – Marriages. Frequency in 2011 - 2013

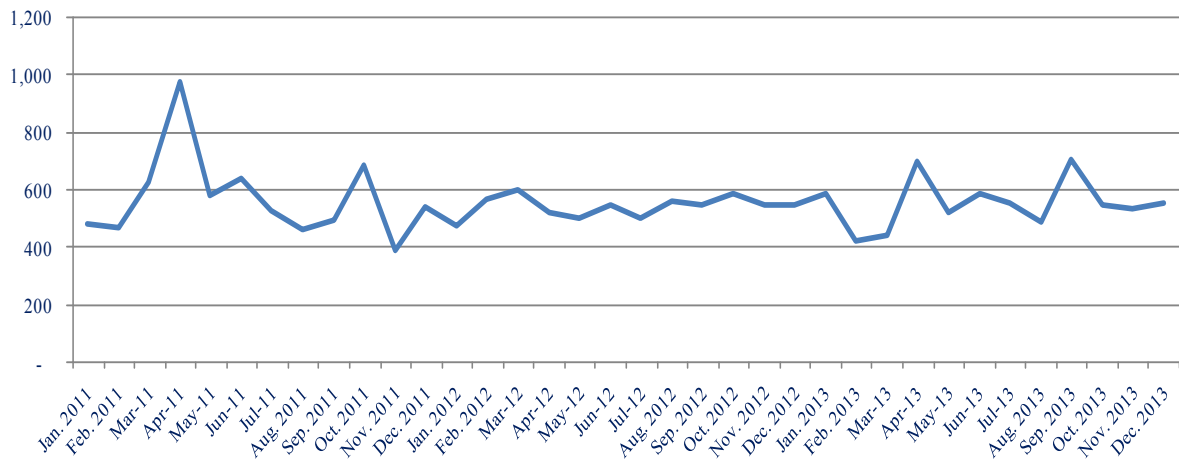


Graph made by CAS based on the General Directorate of Interior Security Forces data (2011 - 2013)

Vital statistics – Divorces

Among the 20,021 divorces for the period January 2011 – December 2013, 34.4% occurred in 2011, 32.5% in 2012, and 33.2% in 2013.

Graph 1.5 – Divorces. Frequency in 2011 - 2013



Graph made by CAS based on the General Directorate of Interior Security Forces data (2011 - 2013)

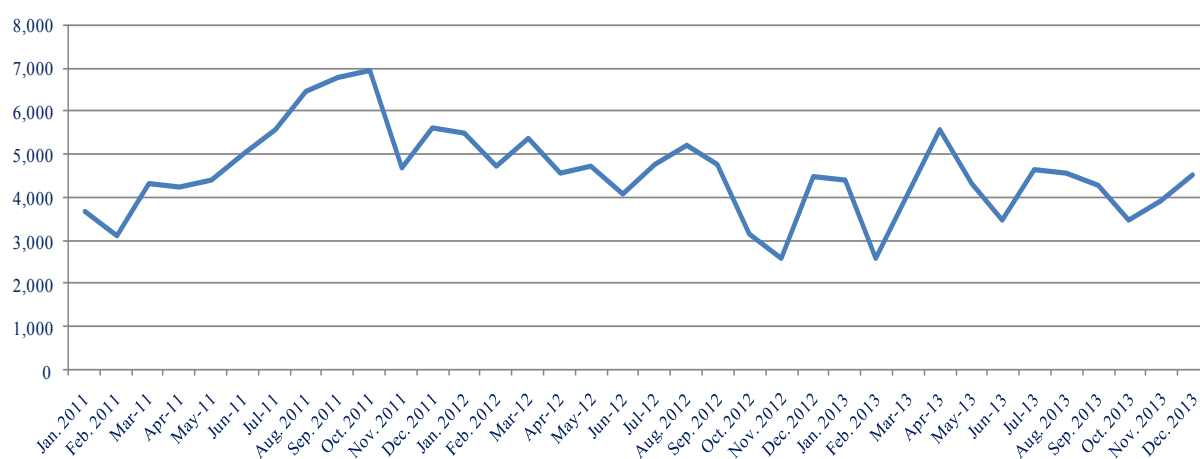
Work permits

Work permits are divided into two categories: given work permits for the first time and renewed work permits by profession and by geographic group with respect to the Geonomenclature 2010. Both have the same total.

Work permits for the first time

Among the 164,905 work permits given for the same time for the period January 2011 – December 2013, 37.0% were given in 2011, 32.7% in 2012, and 30.3% in 2013.

Graph 1.6 – Work permits given for the first time. Frequency in 2011 - 2013



Graph made by CAS based on the Ministry of Labor data (2011 - 2013)

Regarding the geographic regions, these permits were given for Africa, Asia, Europe, America, and Oceania. The times series for the period January 2011 – December 2013 showed the following:

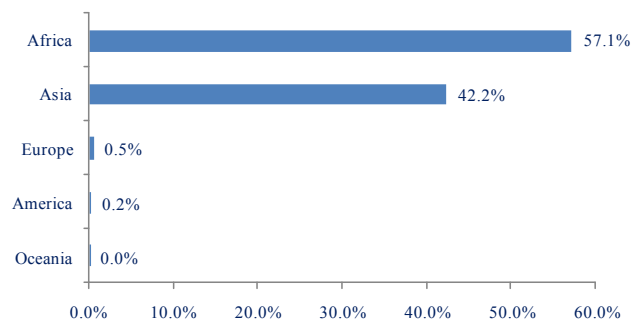
- Africa: 57.1% of total permits for the whole period
- Asia: 42.2% of total permits for the whole period
- Europe: 0.5% of total permits for the whole period
- America: 0.2% of total permits for the whole period.

Table 1.3 – Work permits given for the first time by geographic region. January 2011 – December 2013

First time	Year 2011		Year 2012		Year 2013		Total 2011-2013	
	Number	% of total	Number	% of total	Number	% of total	Number	% of total
Africa	31,641	51.9	33,115	61.3	29,305	58.7	94,061	57.1
Asia	29,003	47.6	20,525	38.0	20,108	40.3	69,636	42.2
Europe	204	0.3	220	0.4	373	0.7	797	0.5
America	124	0.2	122	0.2	92	0.2	338	0.2
Oceania	10	0.0	3	0.0	6	0.0	19	0.0
Total	60,982	100.0	53,985	100.0	49,884	100.0	164,851	100.0

Table made by CAS based on the Ministry of Labor data (2011 - 2013)

Graph 1.7 – Given work permits for the first time by geographic region. Per cent in 2011 - 2013



Graph made by CAS based on the Ministry of Labor data (2011 - 2013)

Renewed workpermits

Among the 402, 720 renewed work permits for the same time for the period January 2011 – December 2013, 30.8% were renewed in 2011, 34.0% in 2012, and 35.2% in 2013.

Regarding the geographic regions, these permits were renewed for Africa, Asia, Europe, America, and Oceania. The times series for the period January 2011 – December 2013 showed the following:

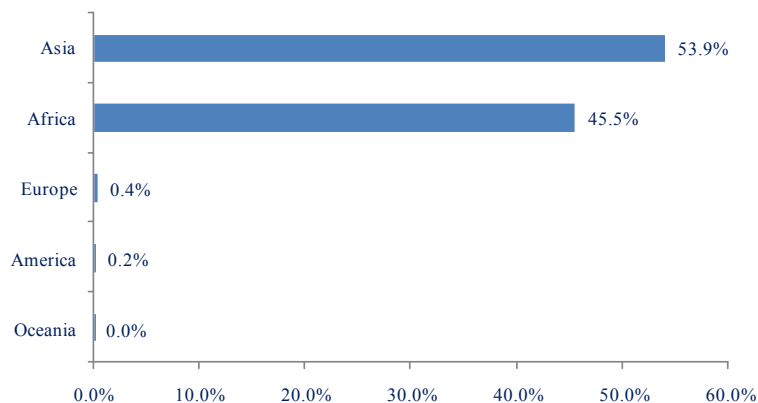
- Asia: 53.9% of total permits for the whole period
- Africa: 45.5% of total permits for the whole period
- Europe: 0.4% of total permits for the whole period
- America: 0.2% of total permits for the whole period.

Table 1.4 – Renewed work permits by geographic region. January 2011 – December 2013

Renewed	Year 2011		Year 2012		Year 2013		Total 2011-2013	
	Number	% of total	Number	% of total	Number	% of total	Number	% of total
Asia	74,593	60.2	73,639	53.7	68,976	48.7	217,208	53.9
Africa	48,522	39.1	62,583	45.7	72,033	50.8	183,138	45.5
Europe	610	0.5	563	0.4	419	0.3	1592	0.4
America	244	0.2	249	0.2	264	0.2	757	0.2
Oceania	7	0.0	10	0.0	8	0.0	25	0.0
Total	74,593	100.0	137,044	100.0	141,700	100.0	402,720	100.0

Table made by CAS based on the Ministry of Labor data (2011 - 2013)

Graph 1.8 – Renewed work permits by geographic region. Per cent in 2011 - 2013



Graph made by CAS based on the Ministry of Labor data (2011 - 2013)

Crime

The crime time series is not homogeneous for the period January 2011 – December 2013. Therefore, the time series analysis is only done for homogeneous data. This data tackles the prisoners, all crimes and car crimes.

Prisoners

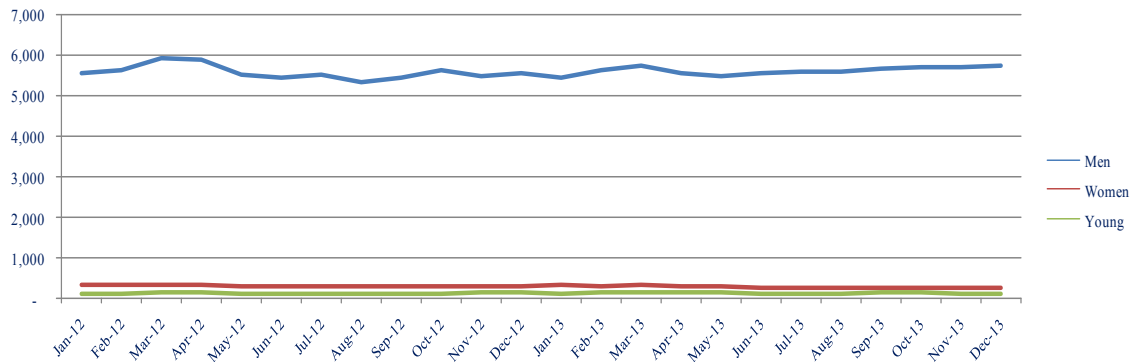
Among the 145,275 prisoners for the period January 2012 – December 2013, 49.9% were detained in 2012 and 50.1% in 2013.

Table 1.5 – Prisoners. January 2012 – December 2013

Prisoners	Year 2012		Year 2013		Total 2012-2013	
	Number	% of total	Number	% of total	Number	% of total
Men	67,092	92.6	67,630	92.9	134,722	92.7
Women	3,766	5.2	3,493	4.8	7,259	5.0
Young	1,609	2.2	1,685	2.3	3,294	2.3
Total	72,467	100.0	72,808	100.0	145,275	100.0

Table made by CAS based on the General Directorate of Interior Security Forces data (2012 - 2013)

Graph 1.9 – Prisoners. Frequency in 2012 - 2013



Graph made by CAS based on the General Directorate of Interior Security Forces data (2012 - 2013)

All crimes

The year 2011 is characterized by yearly data. Therefore, the number of all crimes is 5,997 and theft (41.2%) is the peak.

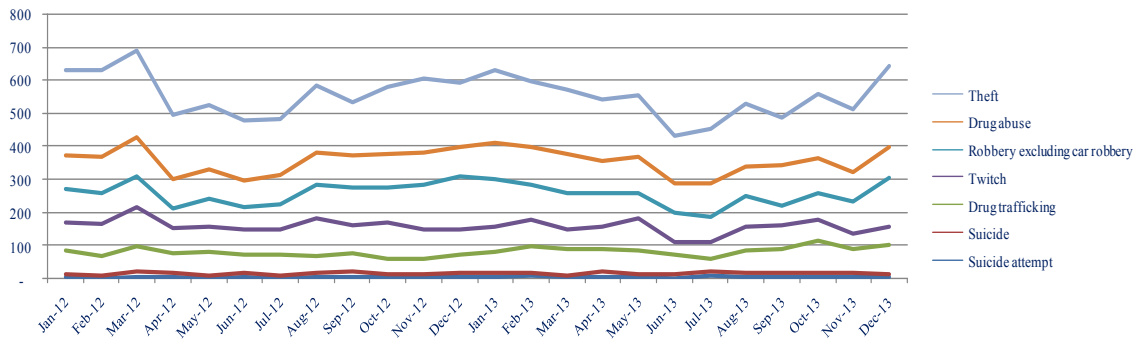
As for the years 2012 and 2013, the data is monthly. Therefore, a time series is constituted. Among the 13,345 crimes that took place during the period January 2012 – December 2013, 51.2% were committed in 2012 and 48.8% in 2013.

Table 1.6 – All crimes. January 2012 – December 2013

All crimes	Year 2012		Year 2013		Total 2012-2013	
	Number	% of total	Number	% of total	Number	% of total
Theft	2,522	36.9	2,273	34.9	4,795	35.9
Drug abuse	1,162	17.0	1,225	18.8	2,387	17.9
Robbery excluding car robbery	1,174	17.2	1,177	18.1	2,351	17.6
Twitch	1,100	16.1	784	12.0	1,884	14.1
Drug trafficking	703	10.3	860	13.2	1,563	11.7
Suicide	108	1.6	111	1.7	219	1.6
Suicide attempt	65	1.0	81	1.2	146	1.1
Total	6,834	100.0	6,511	100.0	13,345	100.0

Table made by CAS based on the General Directorate of Interior Security Forces data (2012 - 2013)

Graph 1.10 – All crimes. Frequency in 2012 - 2013



Graph made by CAS based on the General Directorate of Interior Security Forces data (2012 - 2013)

Car crimes

The year 2011 is characterized by yearly data. Therefore, the number of car crimes is 1,761 and stolen cars (95.6%) is the peak.

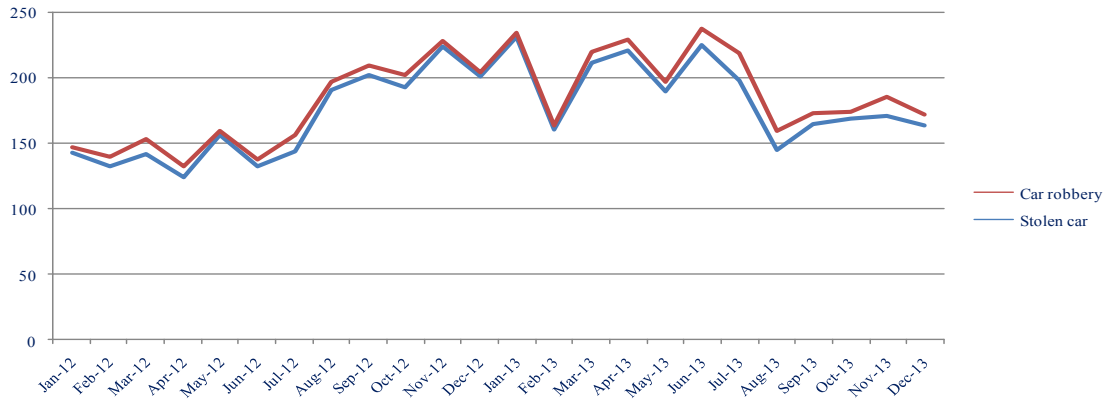
As for the years 2012 and 2013, the data is monthly. Therefore, a time series is constituted. Among the 4,431 car crimes that took place during the period January 2012 – December 2013, 46.6% were committed in 2012 and 53.3% in 2013.

Table 1.7 – Car crimes. January 2012 – December 2013

Car crimes	Year 2012		Year 2013		Total 2012-2013	
	Number	% of total	Number	% of total	Number	% of total
Stolen car	1,984	96.1	2,247	95.0	4,231	95.5
Car robbery	81	3.9	119	5.0	200	4.5
Total	2,065	100.0	2,366	100.0	4,431	100.0

Table made by CAS based on the General Directorate of Interior Security Forces data (2012 - 2013)

Graph 1.11 – Car crimes. Frequency in 2012 - 2013



Graph made by CAS based on the General Directorate of Interior Security Forces data (2012 - 2013)